

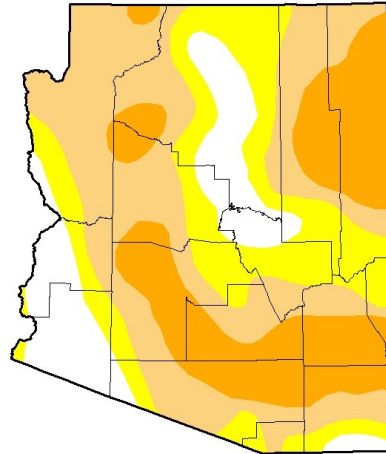
# Drought Status Report

## Short-term Drought Status October 2013

October is typically a dry month across southern Arizona, and this October was no exception. Northern Arizona benefitted from two storms that tracked across the northern counties, one in early October and another weaker storm in the last week of the month. The first system also brought precipitation to central Arizona, though not enough to cause significant change to the short term drought.

### U.S. Drought Monitor Arizona

October 29, 2013  
(Released Thursday, Oct. 31, 2013)  
Valid 7 a.m. EDT



	Drought Conditions (Percent Area)					
	None	D0	D1	D2	D3	D4
Current	14.84	23.24	36.64	25.28	0.00	0.00
Last Week 10/22/2013	14.84	23.24	36.64	25.28	0.00	0.00
3 Months Ago 7/26/2013	0.00	13.29	28.80	35.09	19.77	3.04
Start of Calendar Year 1/1/2013	0.00	2.09	60.13	29.10	8.88	0.00
Start of Water Year 10/1/2012	14.83	23.25	36.63	25.28	0.00	0.00
One Year Ago 10/29/2012	0.00	1.34	63.77	29.22	5.67	0.00

**Intensity:**

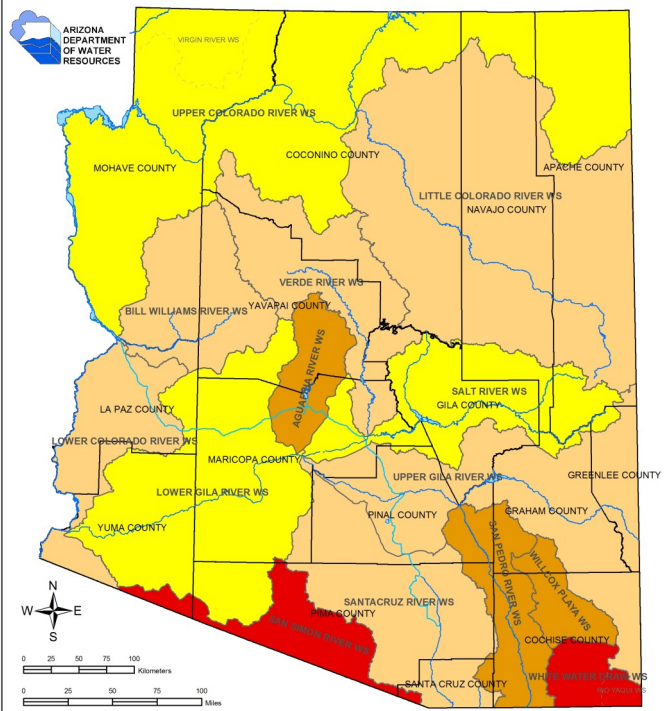
- D0 Abnormally Dry
- D1 Moderate Drought
- D2 Severe Drought
- D3 Extreme Drought
- D4 Exceptional Drought

The Drought Monitor focuses on broad-scale conditions. Local conditions may vary. See accompanying text summary for forecast statements.

Author:  
Brian Fuchs  
National Drought Mitigation Center



<http://droughtmonitor.unl.edu/>



**Watershed Drought Level\*\***

- No Drought
- D0 Abnormally Dry
- D1 Drought - Moderate
- D2 Drought - Severe
- D3 Drought - Extreme
- D4 Drought - Exceptional

**October 2013 Long Term Drought Status**  
Data Through September 30th, 2013

Arizona Drought Preparedness Plan  
Monitoring Technical Committee

\* Watershed merged due to limited data.  
\*\* As of January 2011, drought categories have been adjusted to be consistent with the U.S. Drought Monitor.

## Long-term Drought Status July — September 2013

The current long-term drought status map reflects the monsoon precipitation received July through September. This year, the monsoon brought drought relief to the northern watersheds, where it was quite wet over the summer. However, the southern watersheds, that depend on summer rainfall, had an average monsoon. Although this was good for the rangeland, it was not enough to make up for the deficits of the last two years for long-term drought relief. The exception was the Santa Cruz watershed which improved from severe to moderate drought due to some spring and early summer rainfall that fell in the northern portion of that basin. The southern part of the Santa Cruz is still quite dry.

The long-term drought status is adjusted seasonally. The next update will reflect the fall, which is currently drier than average in the central and southeastern Arizona, and wetter than average in the western counties.