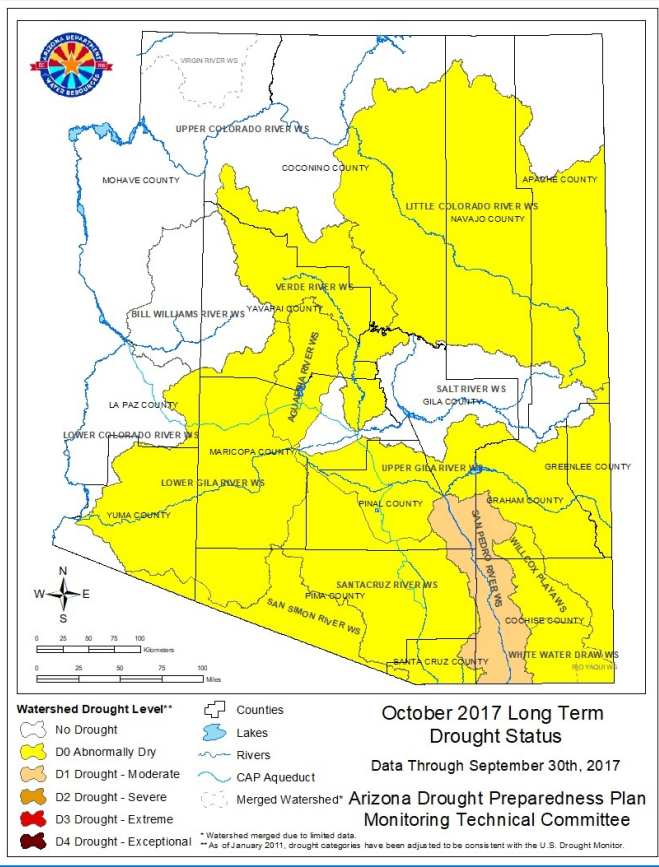
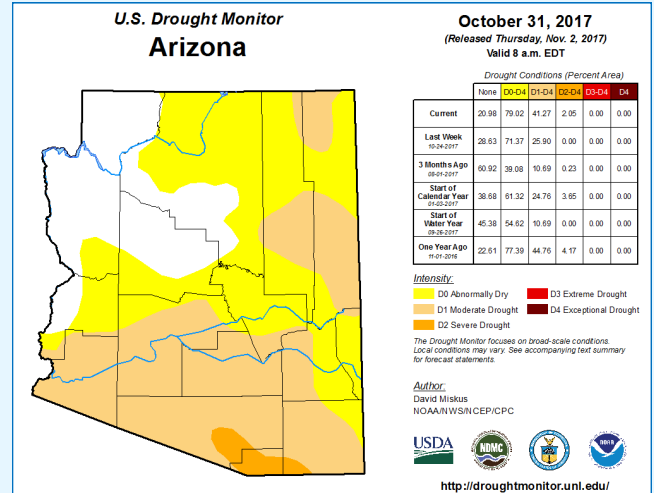


Drought Status Report

October 2017 Short-term Drought Status

The monsoon season ended early followed by a very dry October with drought conditions around the state deteriorating specifically in the southern and eastern regions of Arizona. Due to the dry conditions some locations have seen a second wildfire season.

Abnormally Dry (D0) conditions have expanded throughout all of Apache, Navajo and northern Coconino counties as well as areas of La Paz, southern Mohave and Yavapai counties. Moderate Drought (D1) has also expanded to cover all of Pima, Pinal, most of Maricopa, Cochise, western Graham, southern Gila, central Navajo and Apache counties. In addition, severe Drought (D2) is now encompassing small areas of Pima, Cochise and most of Santa Cruz counties.



July – September 2017 Long-term Drought Status

The monsoon season rains were near average over much of the state. While some areas received below average precipitation, other locations were very wet.

Overall, the summer rainfall was not sufficient for improvements across the state with the Agua Fria watershed dropping from No Drought to Abnormally Dry (D0).

The winter outlook currently indicates somewhat better chances of below-average precipitation for the southwest with drought conditions likely to continue.