

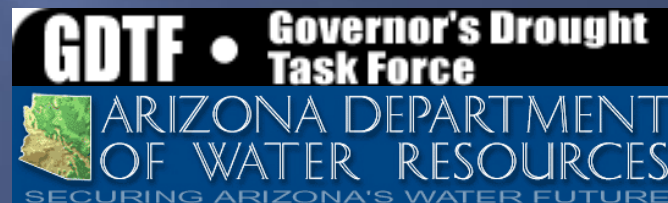
# Drought Monitoring Technical Committee Update

to the

Arizona Interagency Coordinating Group

November 10, 2011

Nancy J. Selover  
Arizona State Climate Office  
Arizona State University  
[azclimate.asu.edu](http://azclimate.asu.edu)



# Arizona Drought Monitoring Technical Committee



ARIZONA DIVISION OF  
EMERGENCY MANAGEMENT



OFFICE OF THE ARIZONA  
STATE CLIMATOLOGIST



In January MTC adjusted our Arizona watershed long-term drought map scale to match the National Drought Monitor scale.

Drought Category	Old Percentile	New Percentile
D0 - Abnormally Dry	26 <sup>th</sup> - 40 <sup>th</sup>	21 <sup>st</sup> - 30 <sup>th</sup>
D1 - Moderate drought	16 <sup>th</sup> - 25 <sup>th</sup>	11 <sup>th</sup> - 20 <sup>th</sup>
D2 - Severe drought	6 <sup>th</sup> - 15 <sup>th</sup>	6 <sup>th</sup> - 10 <sup>th</sup>
D3 - Extreme Drought	< 5 <sup>th</sup>	2 <sup>nd</sup> - 5 <sup>th</sup>
D4 - Exceptional Drought	N.A.	< 2 <sup>nd</sup>

**MTC continues to provide weekly input to the National Drought Monitor to ensure that their weekly map accurately represents conditions in Arizona. The Arizona participants include:**

**NWS, USGS, NRCS, ADWR, CLIMAS, University of Arizona Agricultural Extension, State Climate Office, the Navajo Nation, and local drought impacts groups.**

**NWS and the State Climate Office hosted a Southwest symposium on Hydrometeorology that included sessions on drought and water resources. The MTC participated in the panel discussion along with some of our stakeholders**

**Other activities include:**

**Monthly summary of the short-term drought conditions as depicted in the National Drought Monitor**

**Quarterly mapping of long-term drought conditions for Arizona watersheds**

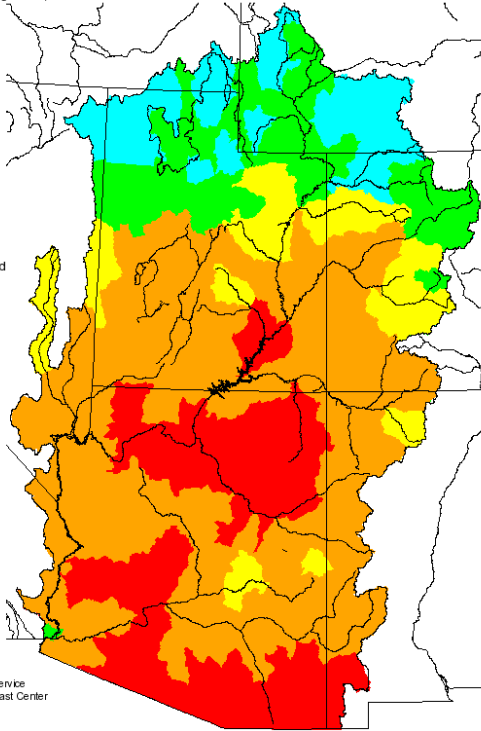
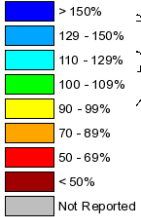
**NCDC now produces a daily gridded temperature and precipitation dataset so we will be able to increase the resolution of our long-term maps beyond the watershed scale.**

# Precipitation Comparison Colorado River Basin

## WY 2009

Seasonal Precipitation, October 2008 - September 2009  
(Averaged by Hydrologic Unit)

**% Average**

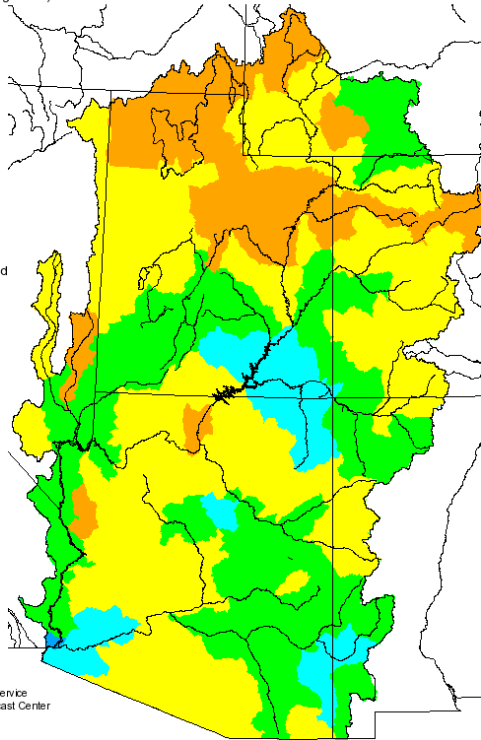
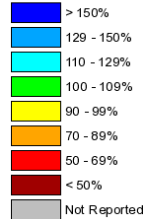


Prepared by  
NOAA, National Weather Service  
Colorado Basin River Forecast Center  
Salt Lake City, Utah  
www.cbafc.noaa.gov

## WY 2010

Seasonal Precipitation, October 2009 - September 2010  
(Averaged by Hydrologic Unit)

**% Average**

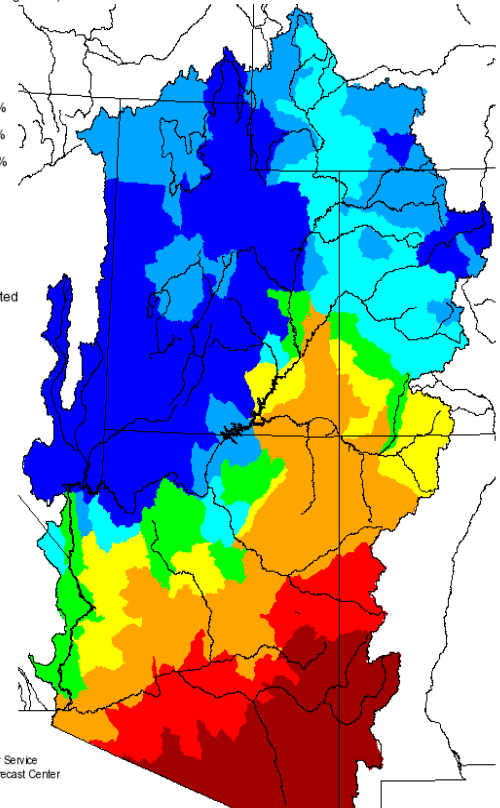
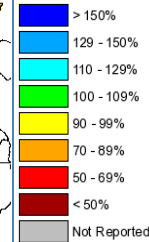


Prepared by  
NOAA, National Weather Service  
Colorado Basin River Forecast Center  
Salt Lake City, Utah  
www.cbafc.noaa.gov

## WY 2011

Seasonal Precipitation, October 2010 - April 2011  
(Averaged by Hydrologic Unit)

**% Average**

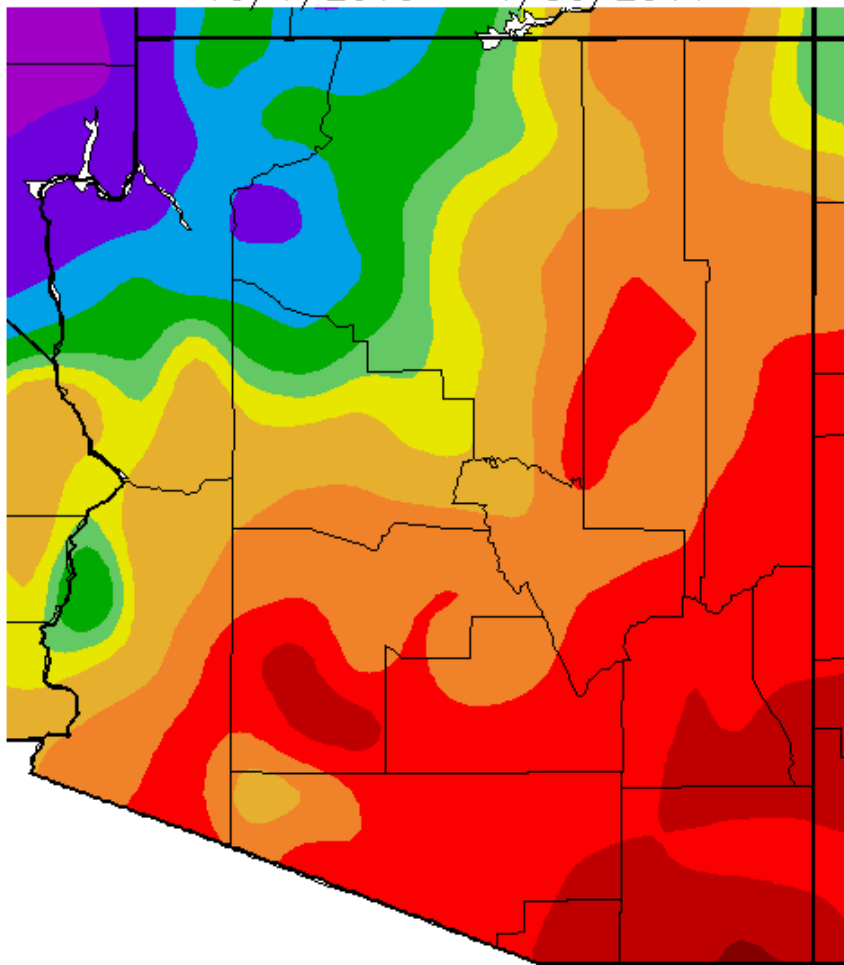


Prepared by  
NOAA, National Weather Service  
Colorado Basin River Forecast Center  
Salt Lake City, Utah  
www.cbafc.noaa.gov

# Precipitation

## Winter

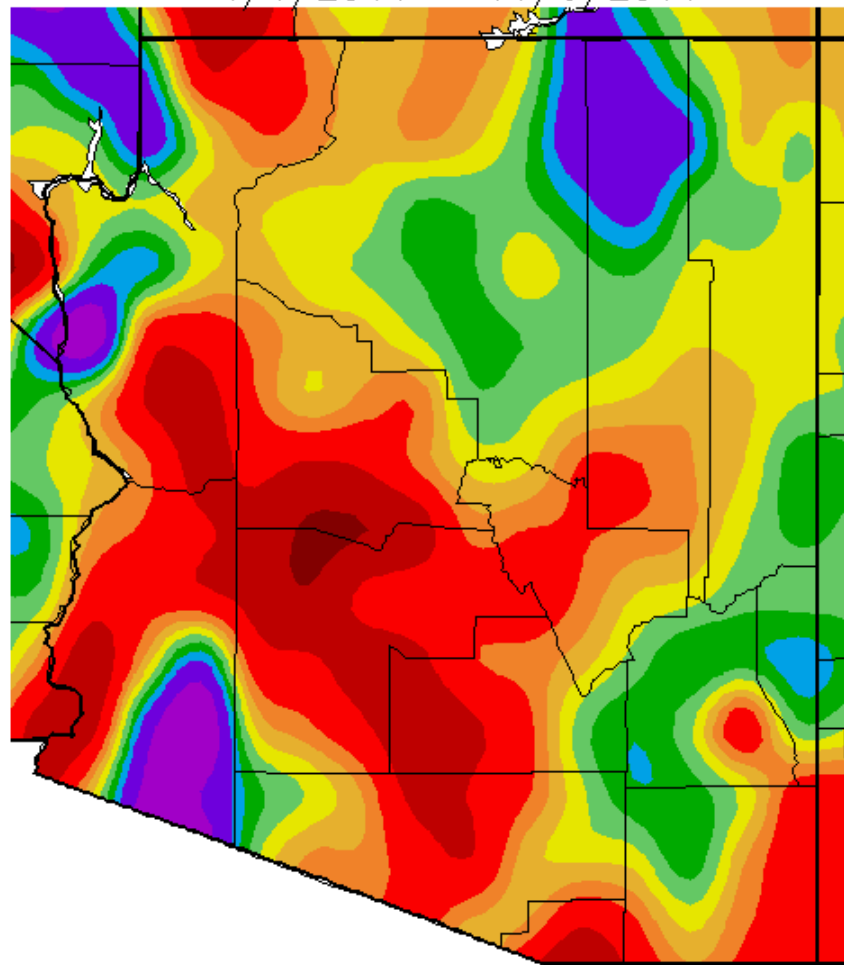
Percent of Average Precipitation (%)  
10/1/2010 - 4/30/2011



Generated 5/01/2011 at WRCC using provisional data.  
NOAA Regional Climate Centers

## Summer

Percent of Average Precipitation (%)  
4/1/2011 - 11/6/2011

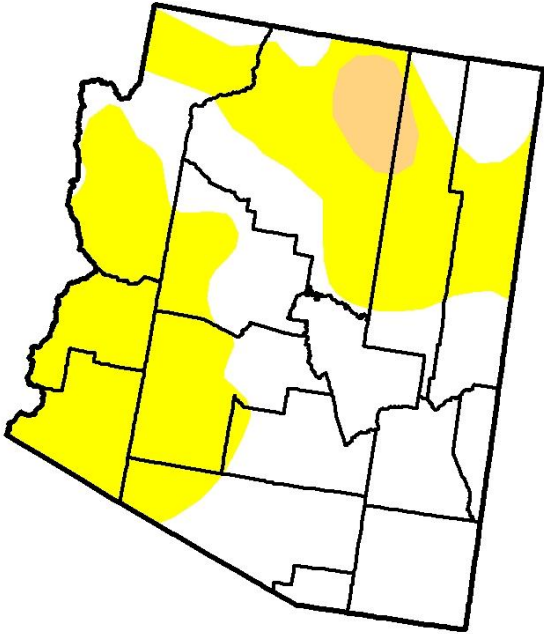


Generated 11/07/2011 at WRCC using provisional data.  
NOAA Regional Climate Centers

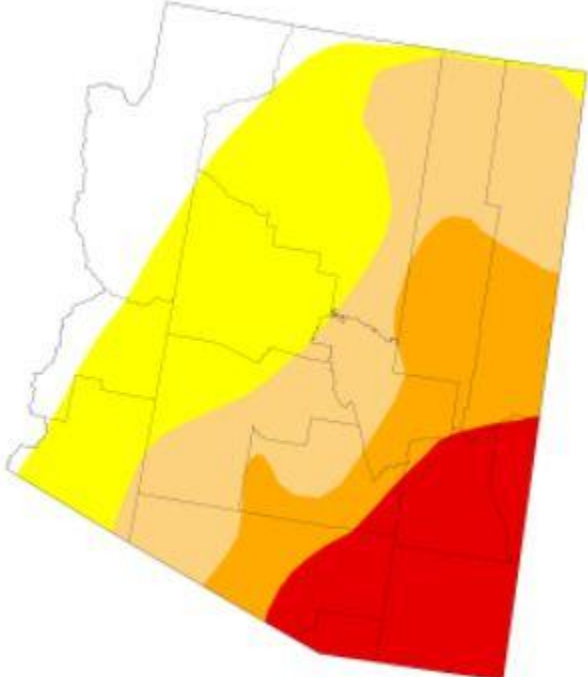


# National Drought Monitor Comparison (Short-Term)

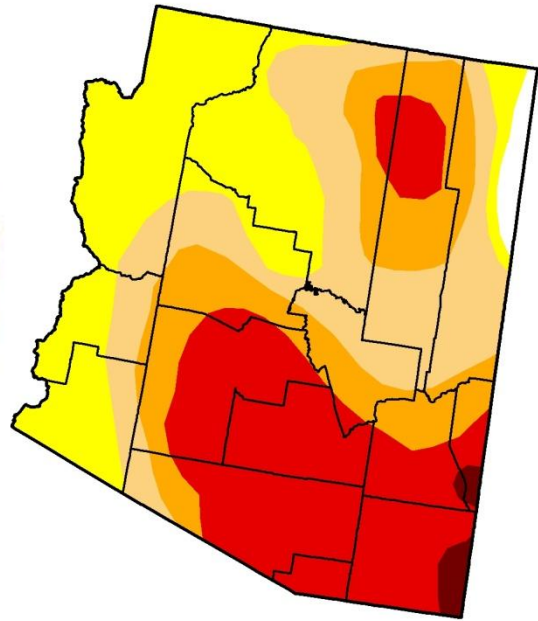
Nov 2, 2010



May 3, 2011



Nov 1, 2011



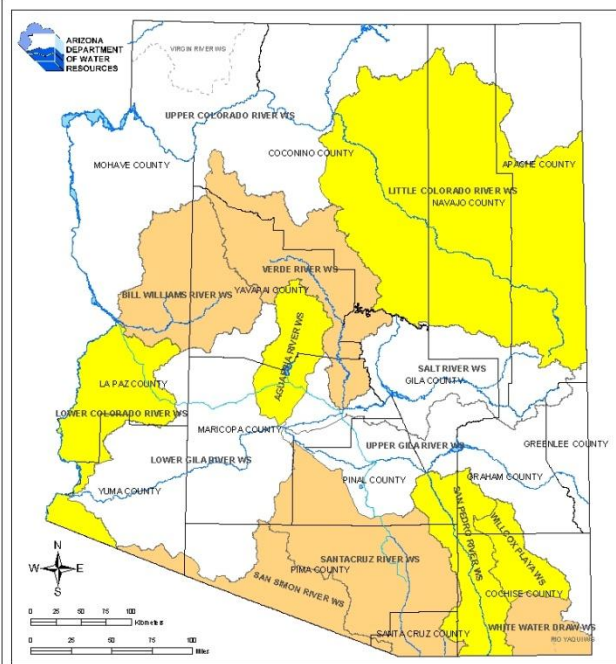
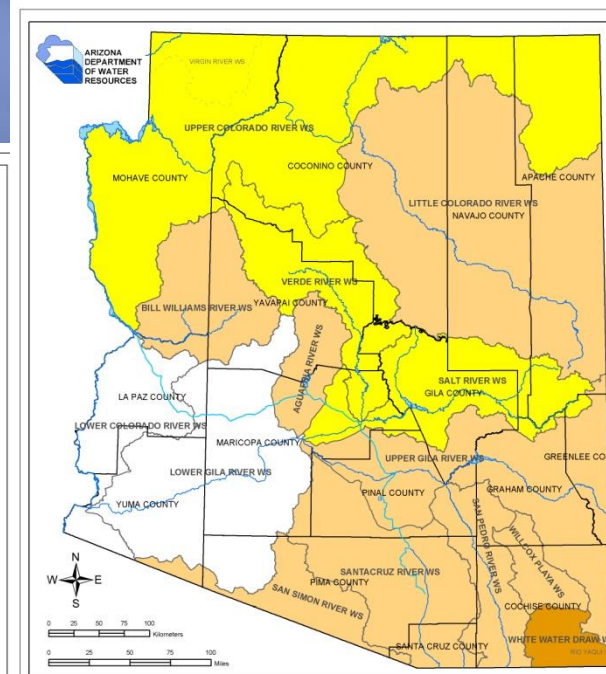
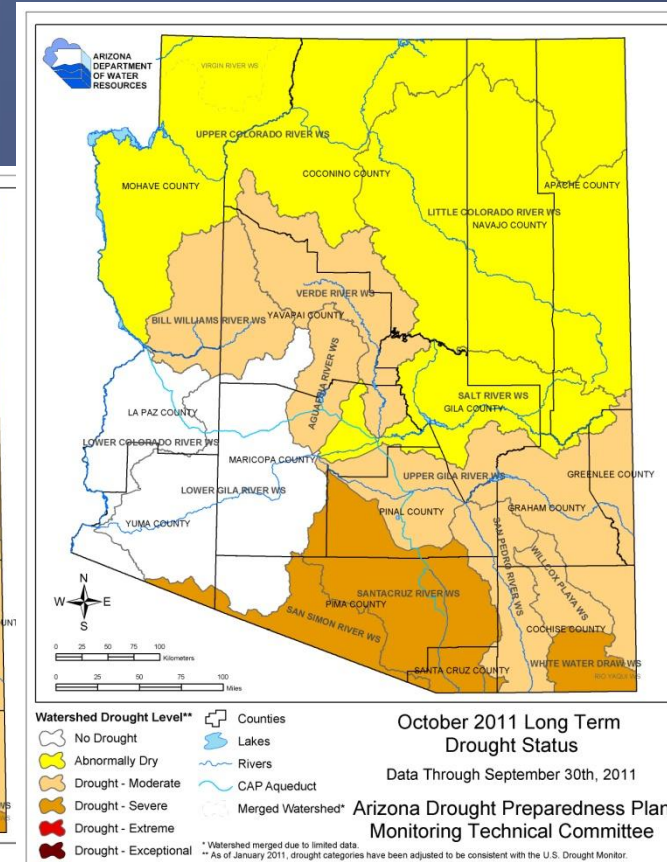


# Long Term Drought Status Comparison

Oct 2011

Apr 2011

Oct 2010

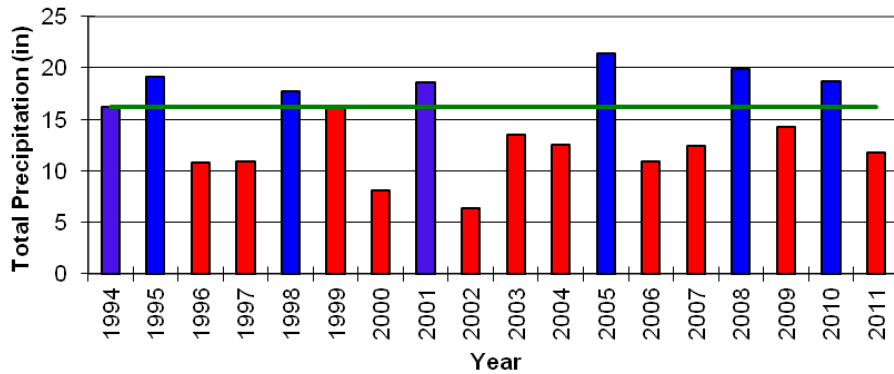


October 2010 Long Term Drought Status  
Data Through September 30th, 2010  
Arizona Drought Preparedness Plan  
Monitoring Technical Committee

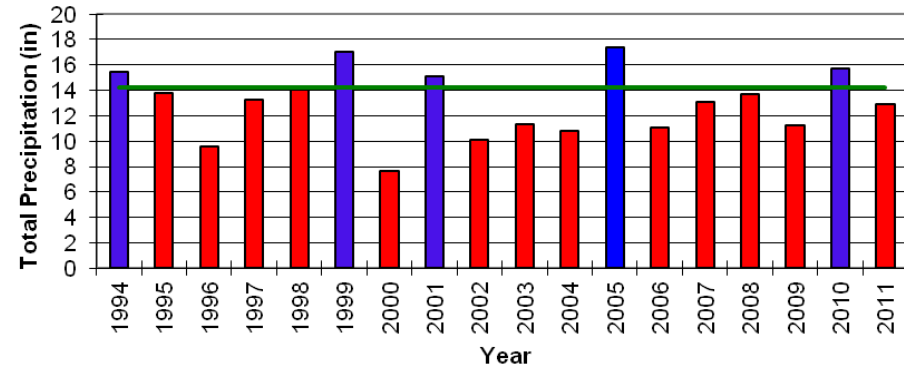
Arizona Drought Preparedness Plan  
Monitoring Technical Committee

# Precipitation in Selected Watersheds for Past 17 Years

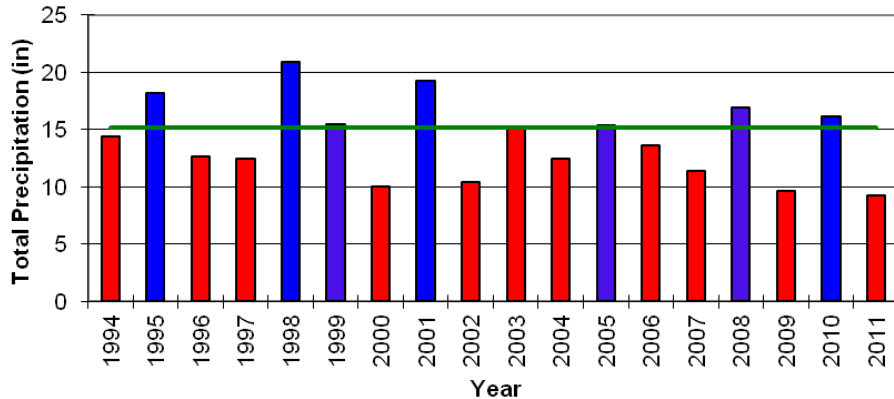
**Salt Watershed 12-month Precipitation  
(Oct-Sep) Median 16.16"  
7 of last 18 years > median**



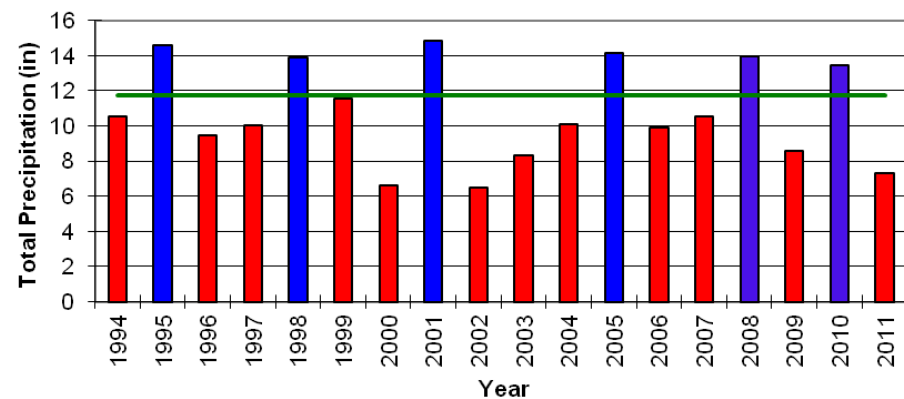
**Little Colorado Watershed 12-month Precipitation  
(Oct-Sep) Median 14.20"  
5 of last 18 years > median**



**Santa Cruz Watershed 12-month Precipitation  
(Oct-Sep) Median 15.20"  
7 of last 18 years > median**



**Upper Gila Watershed 12-month Precipitation  
(Oct-Sep) Median 11.73"  
6 of last 18 years > median**



**Thank you !**

**Questions ?**

**Nancy J. Selover  
Arizona State Climate Office  
Arizona State University**

**480-965-0580  
[selover@asu.edu](mailto:selover@asu.edu)**

**<http://azclimate.asu.edu>**