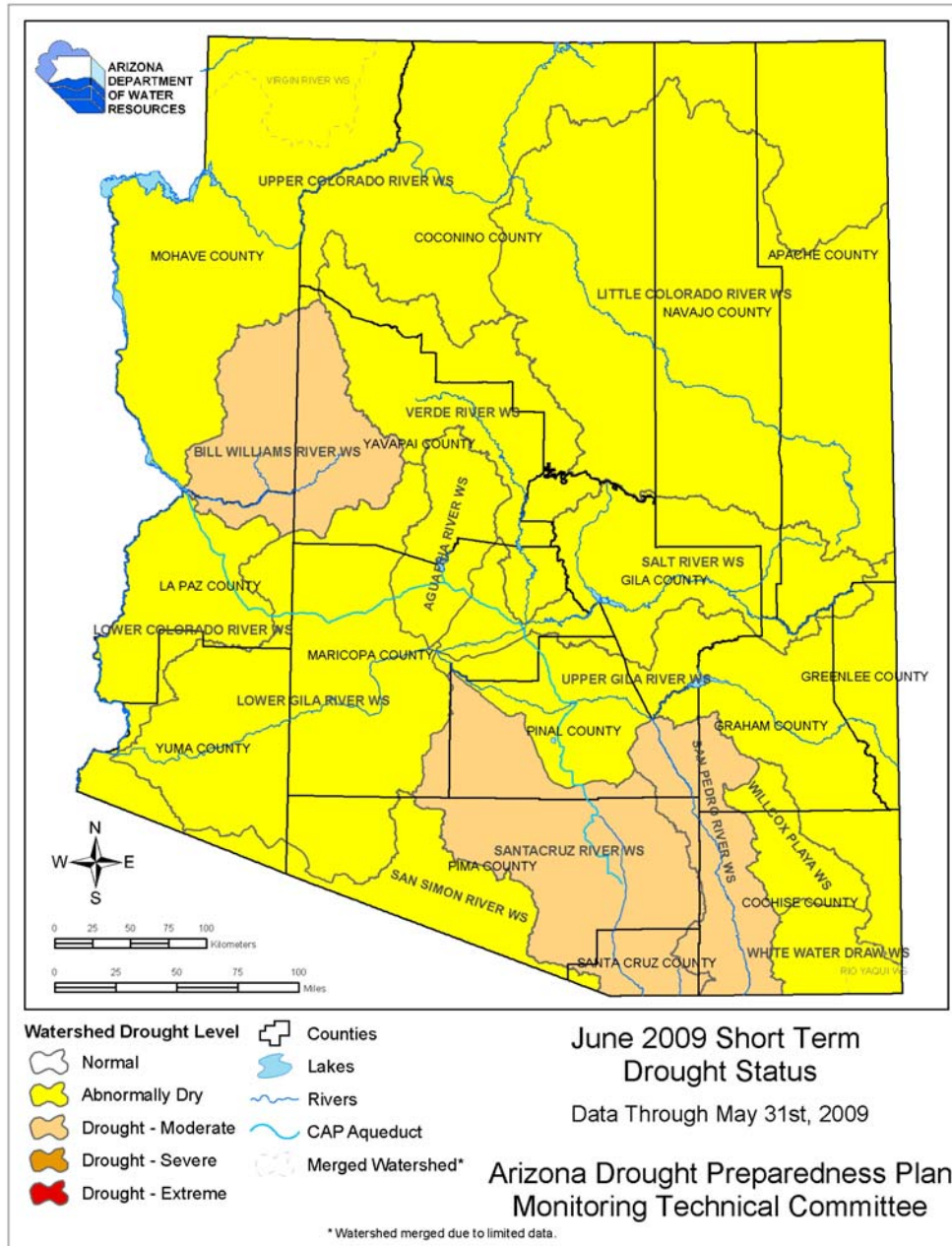


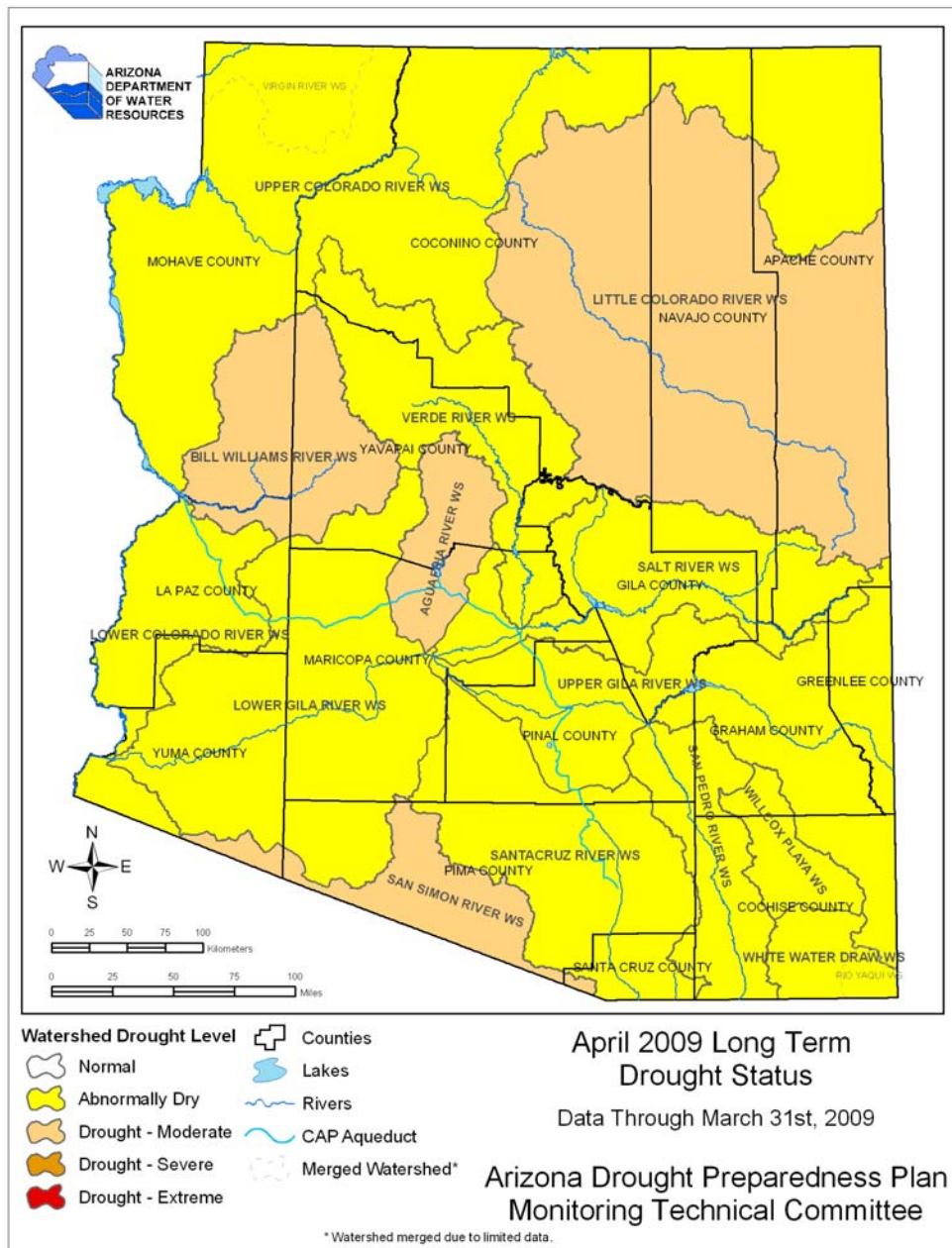
# Drought Status Update

## June 2009



### Short-term Drought Status Update

May precipitation was well above average for almost all watersheds in the state. May is typically the driest month of the year in Arizona, so the extended rainfall was unusual for this time of year. After two weeks of extremely dry and hot weather, it rained somewhere in Arizona every day from the 18<sup>th</sup> through the 31<sup>st</sup> of May. This brought improvements to the Little Colorado, White Water Draw, and Willcox Playa watersheds. Even though May was slightly wetter than average in the Lower Colorado and Bill Williams watersheds, the extreme dryness of the spring season (March-May) caused a worsening of drought conditions from abnormally dry to moderate drought in the Bill Williams watershed and from no drought to abnormally dry in the Lower Colorado watershed. If the monsoon is as wet as expected, short term conditions in the southern half of the state should improve in the next two months.



### Long-term Drought Status

The long-term drought status map will not be updated until July, in the midst of Arizona’s monsoon season. The map above includes data from the last four years, through March 2009.

Current long term conditions show improvement from a year ago. Much of this improvement since last year is due to the wet monsoon season last year, and to the early winter precipitation in November and December, which brought above average rain and snow. The Climate Prediction Center is forecasting above-average precipitation for the first half of the monsoon this year.

