

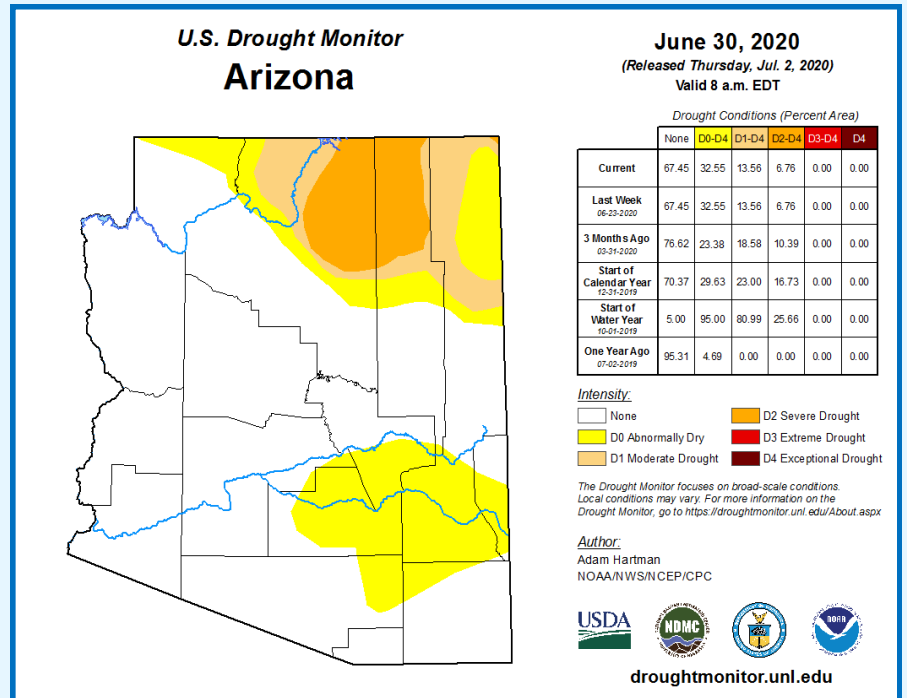
Drought Status Report

June 2020 Short-Term Drought Status

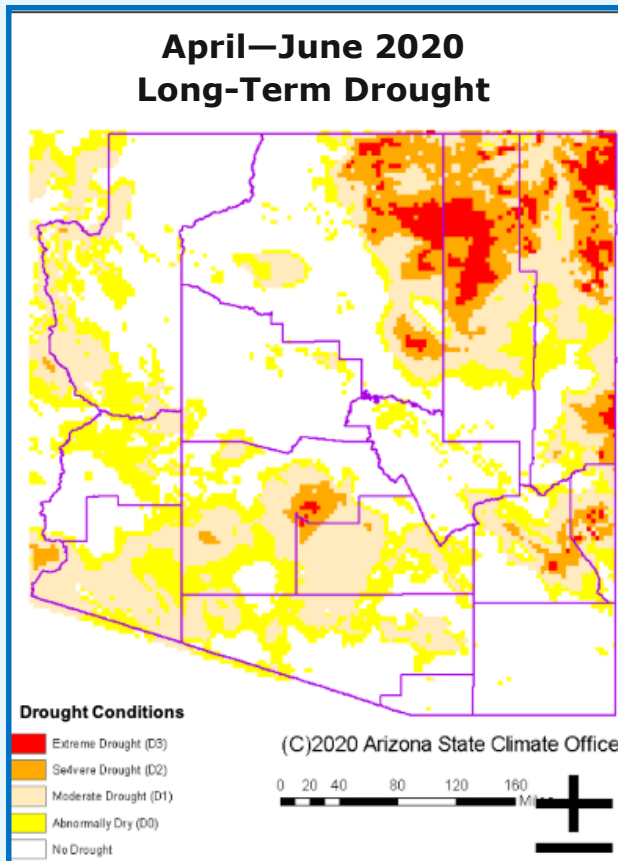
A combination of minimal precipitation in June and warmer than normal temperatures since May led to significant evaporation from soils and vegetation.

The resulting dry conditions led to extremely dry rangelands throughout east central Arizona; as a result, Abnormally Dry (D0) conditions were introduced in Pinal, Graham, southern Gila, southern Greenlee and north-east Pima counties.

Several large wildfires burned through Arizona in June. Wildfire risk is currently high and will continue until the monsoon rains begin.



April–June 2020 Long-Term Drought



April–June 2020 Long-Term Drought Status

The long-term drought map shows some drought degradation across the state with the expansion of Severe Drought (D2) and Extreme Drought (D3) conditions in northeastern and central Arizona, and in Graham, Greenlee and southern Apache counties.

While this winter's precipitation was beneficial, it ended early and was followed by extremely high temperatures that reduced runoff and streamflow.

The last two monsoon seasons were relatively dry across most of the state, though southeastern Arizona had favorable monsoon precipitation the past two years. There are currently no model trends indicating how wet or dry the monsoon may be this summer.