

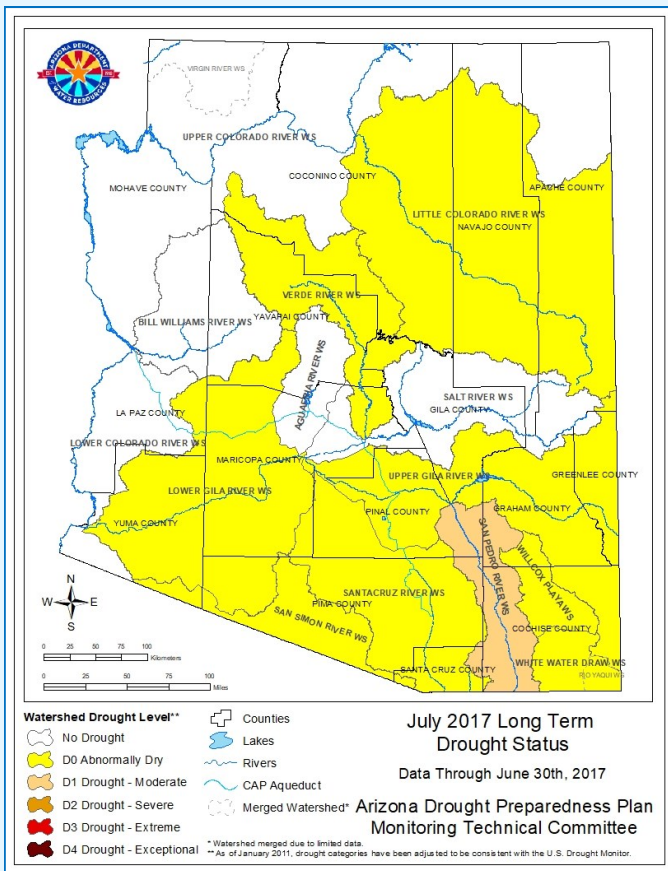
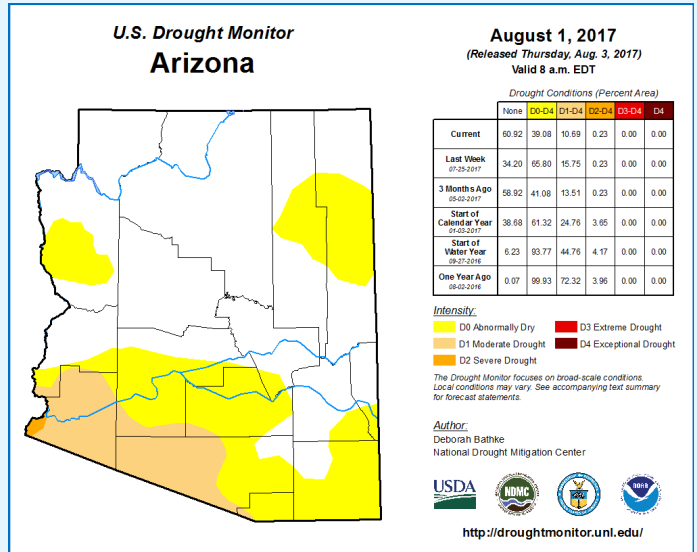
Drought Status Report

July 2017 Short-term Drought Status

The monsoon began slowly but has gathered momentum and brought widespread rain showers to eastern and northern Arizona. While the rainfall was localized, since July 7th there has been precipitation somewhere in the state everyday.

Rainfall in the eastern and southeastern counties has brought above normal calendar-year precipitation to many parts of these areas.

This summer's storms have swept in from the southeast, but have been far less numerous in the southwest corner of the state, leaving Yuma and western Pima counties in Moderate Drought (D1).



April–June 2017 Long-term Drought Status

The long-term map shows that drought conditions deteriorated on the little Colorado River watershed from no drought to abnormally dry (D0) and on the San Pedro watershed from abnormally dry to moderate drought (D1). This is largely due to the continuous dry conditions in these areas since last year's monsoon.

It's likely that the San Pedro and some of the other neighboring watersheds may improve after this monsoon season as this is usually the wet time of year for the southern watersheds.