

# Drought Status Report

## Short-term Drought Status — July 2014

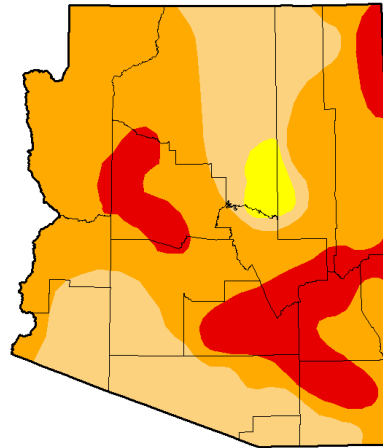
Although many areas have received above average rainfall this monsoon, precipitation has been highly localized so far.

July precipitation brought some improvement to the southern and eastern parts of the state, where parts of Pima and Cochise counties, southern Apache County and northern Greenlee County improved from severe to moderate drought.

Further improvement is anticipated, as August is typically our wettest month in central and southern Arizona.

### U.S. Drought Monitor Arizona

**July 29, 2014**  
(Released Thursday, Jul. 31, 2014)  
Valid 8 a.m. EDT



	Drought Conditions (Percent Area)					
	None	D0-D1	D1-D2	D2-D3	D3-D4	D4
<b>Current</b>	0.00	100.00	97.88	68.25	16.64	0.00
<b>Last Week</b> 7/22/2014	0.00	100.00	97.88	72.30	17.58	0.00
<b>3 Months Ago</b> 4/29/2014	0.00	100.00	98.17	61.20	7.68	0.00
<b>Start of Calendar Year</b> 1/1/2014	20.72	79.28	53.58	14.73	0.00	0.00
<b>Start of Water Year</b> 10/1/2013	14.83	85.17	61.91	25.28	0.00	0.00
<b>One Year Ago</b> 7/29/2013	0.00	100.00	96.71	57.90	22.61	3.04

**Intensity:**  
 D0 Abnormally Dry  
 D1 Moderate Drought  
 D2 Severe Drought  
 D3 Extreme Drought  
 D4 Exceptional Drought

The Drought Monitor focuses on broad-scale conditions. Local conditions may vary. See accompanying text summary for forecast statements.

**Author:**  
Brad Rigbey  
U.S. Department of Agriculture



<http://droughtmonitor.unl.edu/>

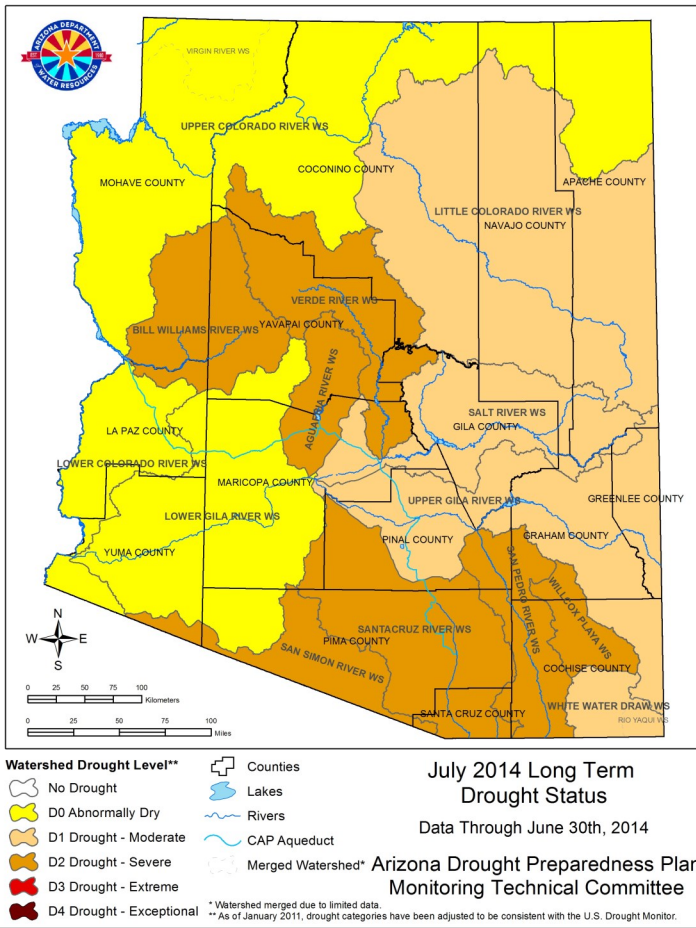
## Long-term Drought Status April — June 2014

Spring was typically dry across the state, and all watersheds except the lower Colorado River saw no change in their long-term drought status. The lower Colorado River watershed dropped from no drought to abnormally dry (D-0).

Even though dry conditions are normal for spring, the deficits are mounting. BLM observations include dirt tanks going dry earlier than usual, a decrease in perennial grasses not related to grazing, and die back of creosote bush and ironweed trees in the southeastern part of the state. State parks report low lake levels at Lyman Lake, Fool Hollow, Patagonia Lake and Alamo Lake.

Further degradation is likely unless the monsoon precipitation meets or exceeds the long term average.

*The next update in early November will reflect the monsoon conditions of July, August and September.*



**Watershed Drought Level\*\***

- No Drought
- D0 Abnormally Dry
- D1 Drought - Moderate
- D2 Drought - Severe
- D3 Drought - Extreme
- D4 Drought - Exceptional

**July 2014 Long Term Drought Status**  
Data Through June 30th, 2014

**Arizona Drought Preparedness Plan**  
Monitoring Technical Committee

\*\* Watershed merged due to limited data.  
\*\*As of January 2011, drought categories have been adjusted to be consistent with the U.S. Drought Monitor.