

# Drought Status Update

## Short-term Drought Status Update

July finally brought some monsoon rainfall to the state, but so far the monsoon has been drier than normal. Storms have been quite localized, with some areas receiving significant rainfall and nearby locations receiving none.

We have not changed the short-term map because the overall conditions are still very dry in most areas. Recent rainfall has not yet been enough to make up the deficits on the rangeland or fill the stockponds.

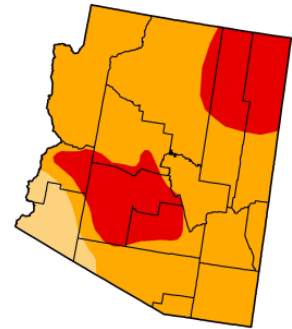
## U.S. Drought Monitor Arizona

July 31, 2012  
Valid 7 a.m. EST

	Drought Conditions (Percent Area)					
	None	D0-D4	D1-D4	D2-D4	D3-D4	D4
Current	0.00	100.00	100.00	94.07	25.07	0.00
Last Week (07/24/2012 map)	0.00	100.00	100.00	94.07	25.07	0.00
3 Months Ago (05/01/2012 map)	0.00	100.00	96.10	67.19	16.29	0.00
Start of Calendar Year (12/27/2011 map)	16.70	83.30	60.34	36.56	2.78	0.00
Start of Water Year (09/27/2011 map)	0.02	99.98	69.76	42.81	15.34	1.67
One Year Ago (07/26/2011 map)	11.15	88.85	60.35	37.15	14.02	4.83

*Intensity:*

- D0 Abnormally Dry
- D1 Drought - Moderate
- D2 Drought - Severe
- D3 Drought - Extreme
- D4 Drought - Exceptional



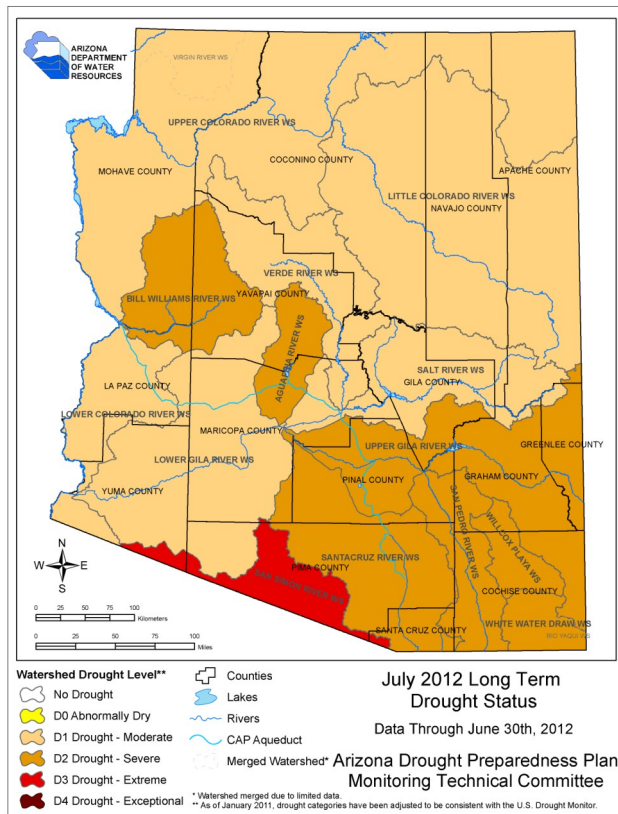
The Drought Monitor focuses on broad-scale conditions. Local conditions may vary. See accompanying text summary for forecast statements.

<http://droughtmonitor.unl.edu>



Released Thursday, August 2, 2012  
Mark Svoboda, National Drought Mitigation Center

## Long-term Drought Status Update



Northern and eastern Arizona have been much drier than normal with the Upper Colorado, Little Colorado, Salt and Upper Gila River watersheds all downgraded one drought category since April.

Spring of 2012 was drier than spring of 2010 (a relatively wet year) and spring of 2009, so the cumulative dryness has increased. Following the very dry winter, wild fire conditions were very bad. Fortunately, Arizona had very few large fires, unlike last year or like New Mexico had this year.

The current shift toward El Niño is strengthening, so we are cautiously optimistic for a wetter than normal winter.