

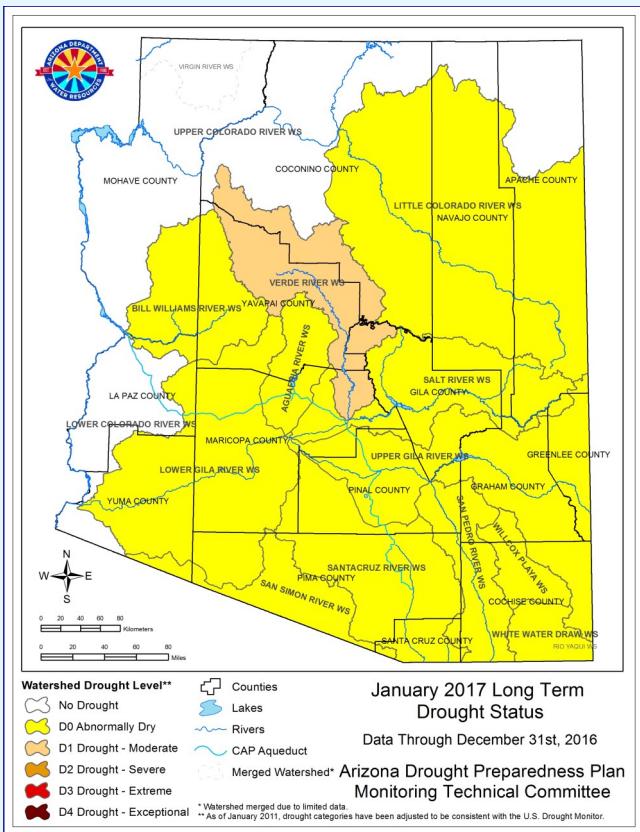
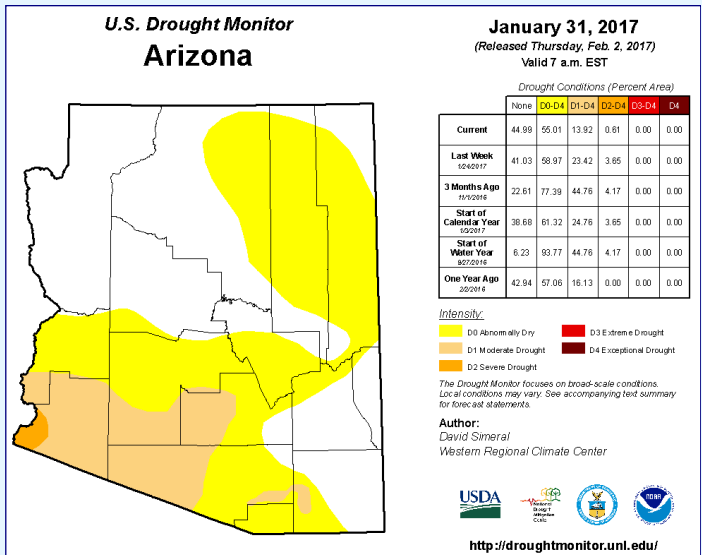
# Drought Status Report

## January 2017 Short-term Drought Status

The winter storms have continued and even increased during January, bringing much needed rain and snow to the state.

Heavy snow on the Colorado Plateau has led to the removal of moderate drought (D1) across Navajo and Apache counties, and even the southwest has seen improvements with an area of severe drought (D2) upgraded to moderate drought across most of Yuma County. Heavy snow along the Mogollon Rim led to improvements from Abnormally Dry (D0) to No Drought across the northern border of Gila County.

There is a strong ridge of high pressure building over the southwest so dry conditions are forecasted for the next week or so. If the high-pressure system breaks down and moves eastward allowing storm tracks to return to the southwest, this could be a relatively wet year for Arizona.



## October–December 2016 Long-term Drought Status

The La Niña conditions of cooler than normal sea surface temperatures in the Central Pacific Ocean did not develop this winter, and a return to the normal jet stream pattern was observed.

So far, this winter's snowpack is above normal and the typical Arizona winter storms have returned. If that pattern continues through April, some of the long-term deficits of the past five years may be reduced, leading to improvements in drought conditions across Arizona.

However, early February will be dry and warm, similar to the dry and warm conditions of January last year. If this continues through the rest of the winter, most of the state may remain abnormally dry or in moderate drought conditions.