

Drought Monitoring Technical Committee Update

to the

Arizona Interagency Coordinating Group

May 17, 2016

Nancy J. Selover
Arizona State Climate Office
Arizona State University
azclimate.asu.edu



Arizona Drought Monitoring Technical Committee

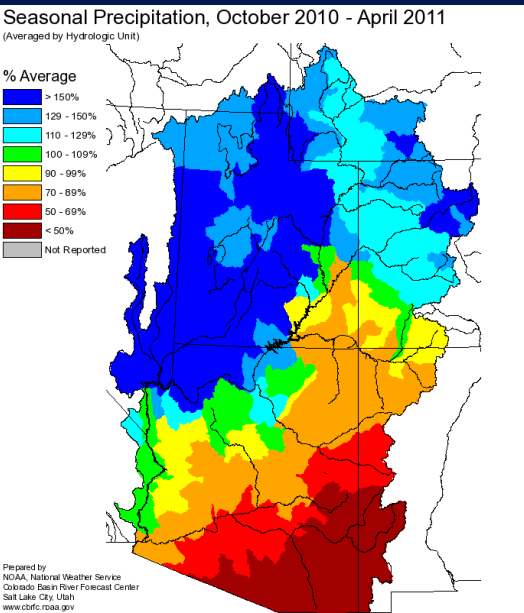


ARIZONA DIVISION OF EMERGENCY MANAGEMENT

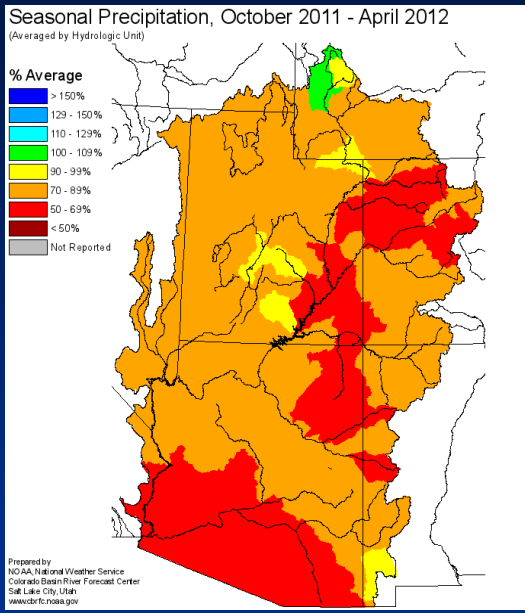


Precipitation Comparison Colorado River Basin

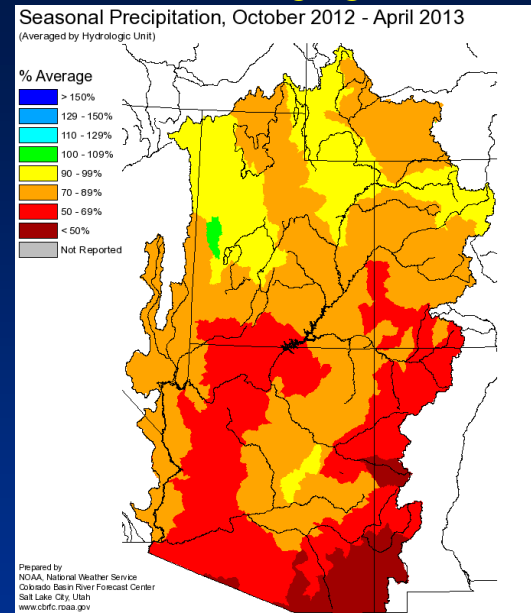
WY 2011



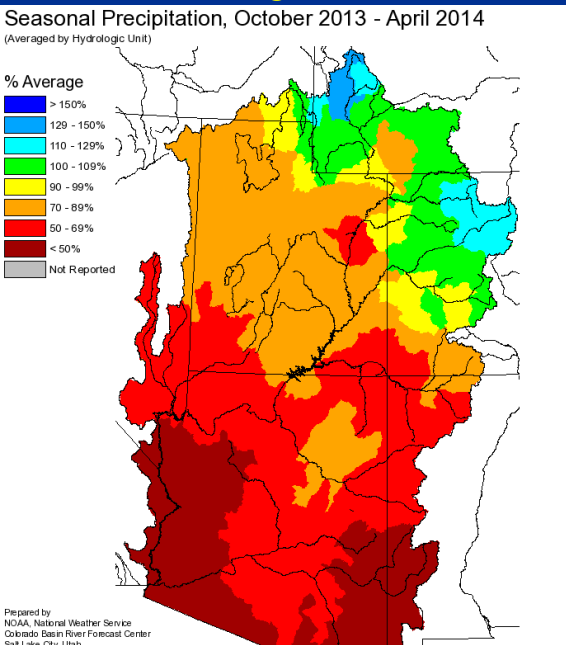
WY 2012



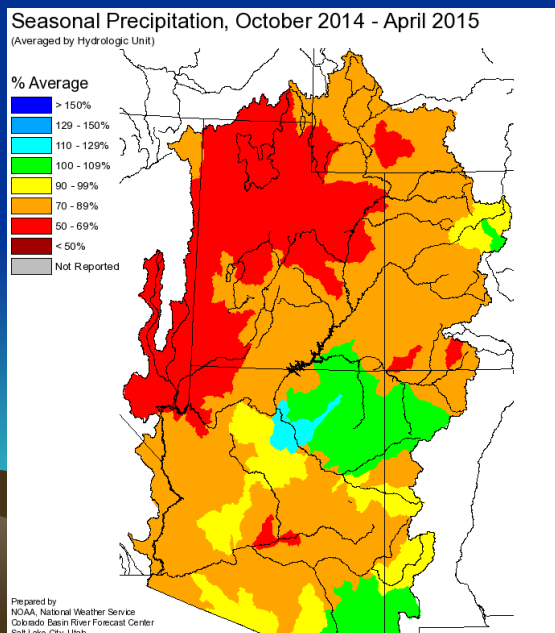
WY 2013



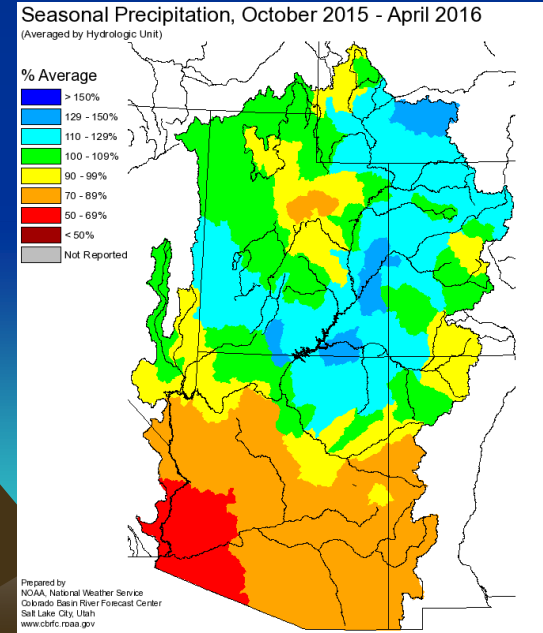
WY 2014



WY 2015

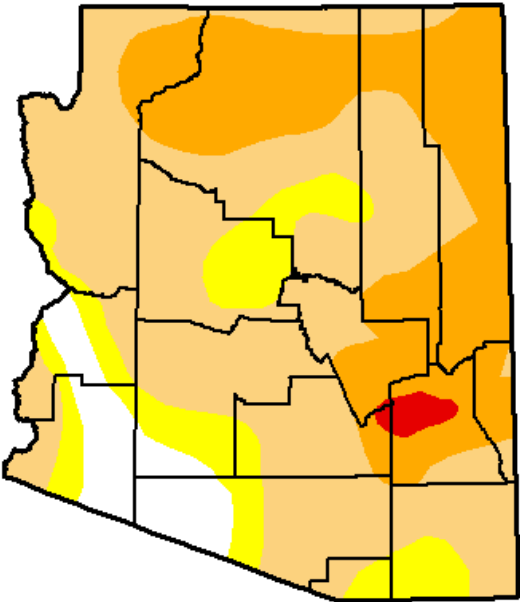


WY 2016

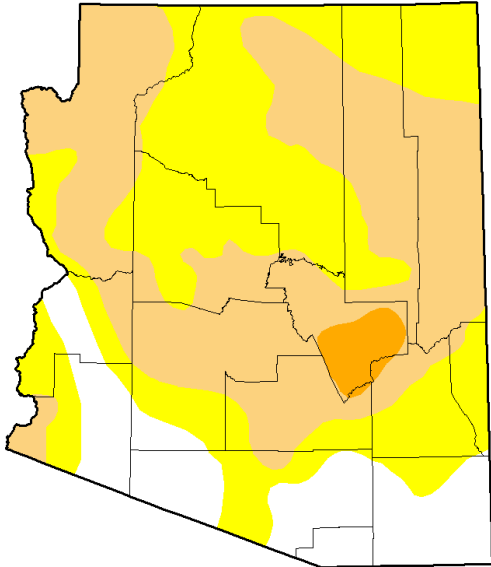


National Drought Monitor Comparison (Short-Term)

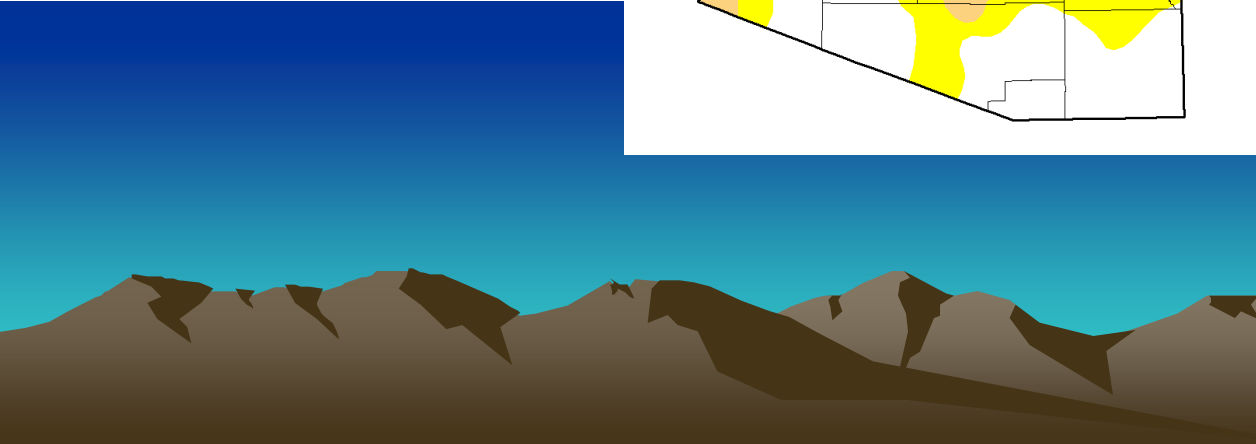
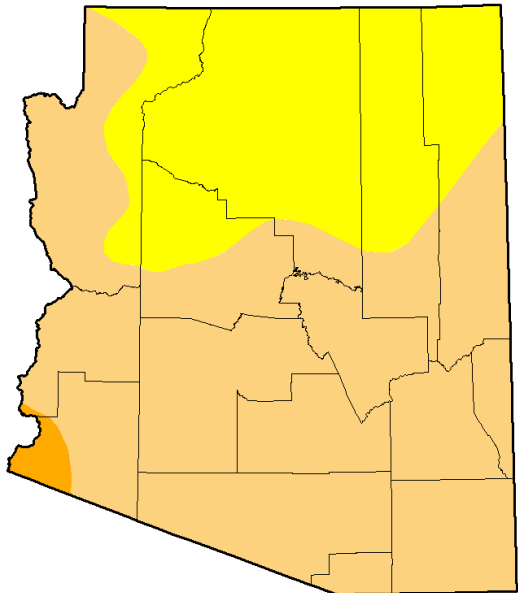
Apr 28, 2015



Nov 3, 2015



May 3, 2016

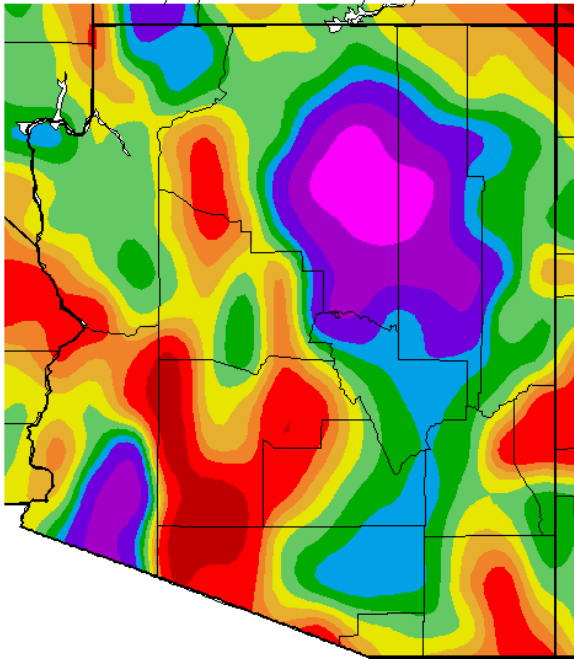


WY 2016 Precipitation

WY 2016

Oct-Dec 2015

Percent of Average Precipitation (%)
10/1/2015 – 12/31/2015

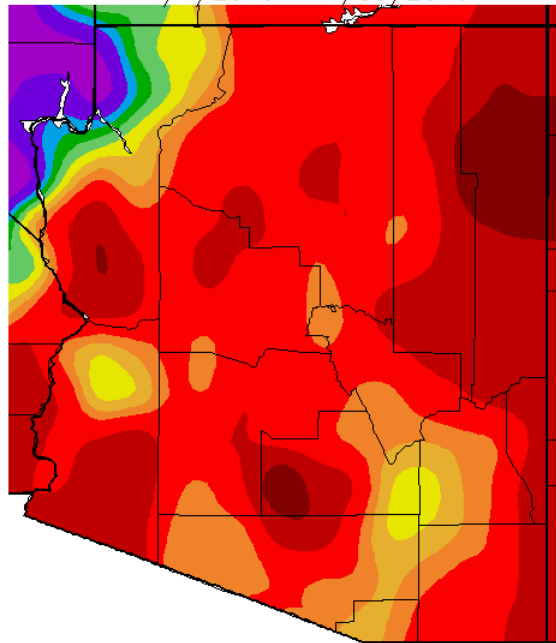


25 50 70 80 90 100 110 120 130 150 175

Generated 1/01/2016 at WRCC using provisional data.
NOAA Regional Climate Centers

Jan-Apr 2016

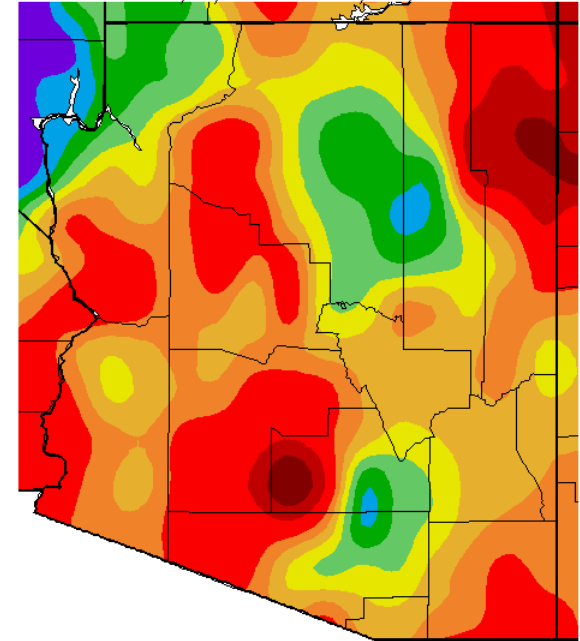
Percent of Average Precipitation (%)
1/1/2016 – 4/30/2016



25 50 70 80 90 100 110 120 130 150 175

Generated 5/01/2016 at WRCC using provisional data.
NOAA Regional Climate Centers

Percent of Average Precipitation (%)
10/1/2015 – 4/30/2016



25 50 70 80 90 100 110 120 130 150 175

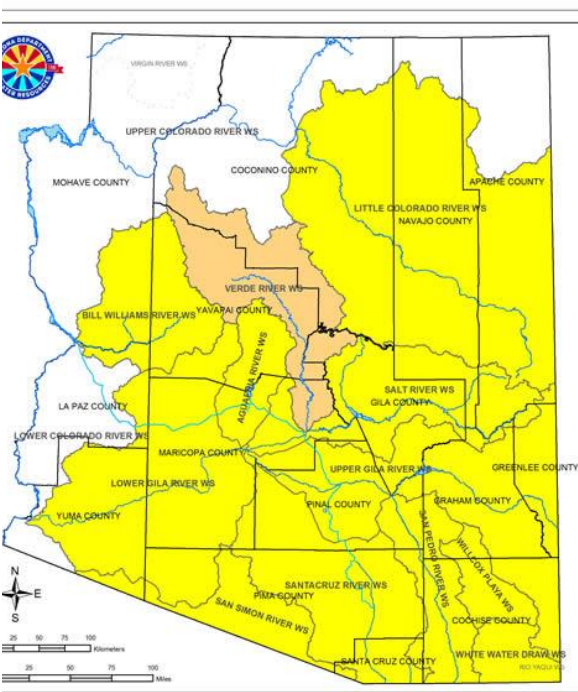
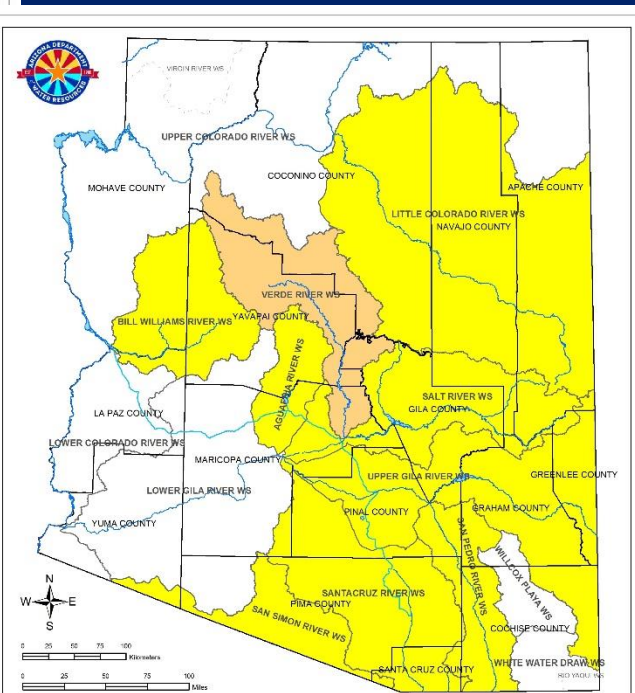
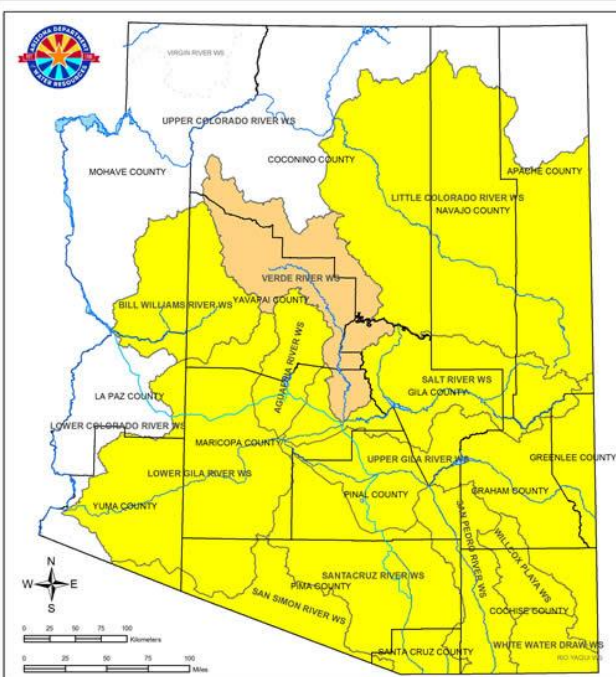
Generated 5/01/2016 at WRCC using provisional data.
NOAA Regional Climate Centers

Long Term Drought Status Comparison

Apr 2015

Oct 2015

Apr 2016



Watershed Drought Level**

- No Drought
- D0 Abnormally Dry
- D1 Drought - Moderate
- D2 Drought - Severe
- D3 Drought - Extreme
- D4 Drought - Exceptional

Legend:

- Counties
- Lakes
- Rivers
- CAP Aqueduct
- Merged Watershed*

April 2016 Long Term Drought Status
Data Through March 31st, 2016

Merged Watershed* Arizona Drought Preparedness Plan Monitoring Technical Committee

* Watershed merged due to limited data.
** As of January 2011, drought categories have been adjusted to be consistent with the U.S. Drought Monitor.

Watershed Drought Level**

- No Drought
- D0 Abnormally Dry
- D1 Drought - Moderate
- D2 Drought - Severe
- D3 Drought - Extreme
- D4 Drought - Exceptional

Legend:

- Counties
- Lakes
- Rivers
- CAP Aqueduct
- Merged Watershed*

October 2015 Long Term Drought Status
Data Through September 30th, 2015

Merged Watershed* Arizona Drought Preparedness Plan Monitoring Technical Committee

* Watershed merged due to limited data.
** As of January 2011, drought categories have been adjusted to be consistent with the U.S. Drought Monitor.

Watershed Drought Level**

- No Drought
- D0 Abnormally Dry
- D1 Drought - Moderate
- D2 Drought - Severe
- D3 Drought - Extreme
- D4 Drought - Exceptional

Legend:

- Counties
- Lakes
- Rivers
- CAP Aqueduct
- Merged Watershed*

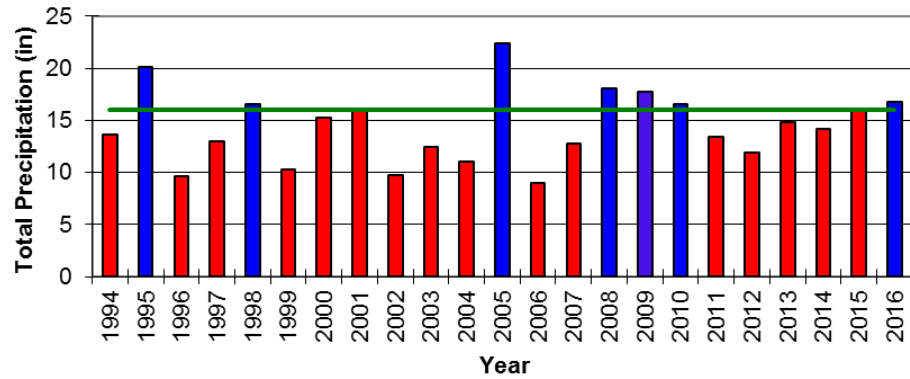
April 2016 Long Term Drought Status
Data Through March 31st, 2016

Merged Watershed* Arizona Drought Preparedness Plan Monitoring Technical Committee

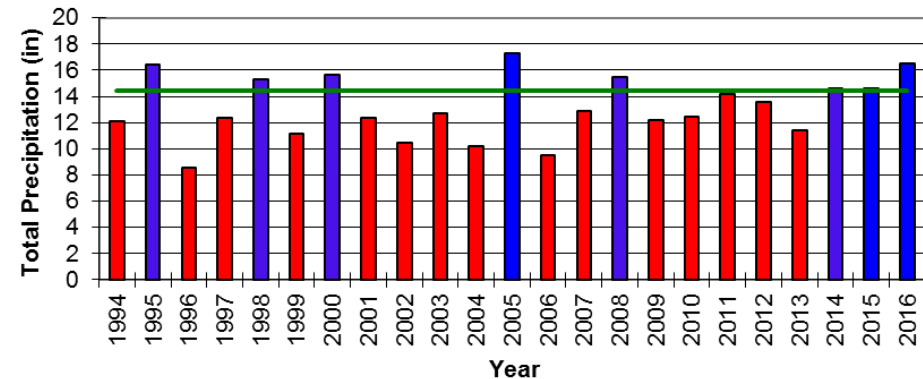
* Watershed merged due to limited data.
** As of January 2011, drought categories have been adjusted to be consistent with the U.S. Drought Monitor.

Precipitation in Selected Watersheds for Past 23 Years

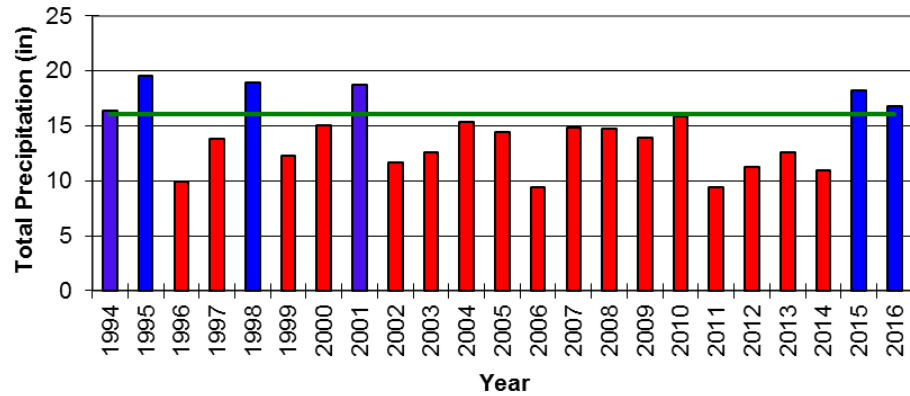
Salt Watershed 12-month Precipitation (Apr-Mar) Mean 16.06"
6 of last 23 years > mean



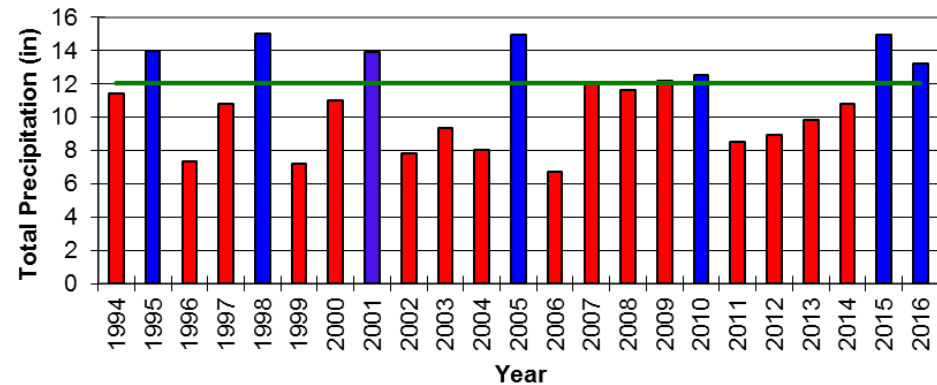
Little Colorado Watershed 12-month Precipitation (Apr-Mar) Mean 14.40"
8 of last 23 years > mean



Santa Cruz Watershed 12-month Precipitation (Apr-Mar) Mean 16.02"
6 of last 23 years > mean



Upper Gila Watershed 12-month Precipitation (Apr-Mar) Mean 12.05"
7 of last 23 years > mean



Thank you !

Questions ?

**Nancy J. Selover
Arizona State Climate Office
Arizona State University**

**480-965-0580
selover@asu.edu**

<http://azclimate.asu.edu>

