

# Water Supply of Arizona

**Colorado River  
2.8 MAF**

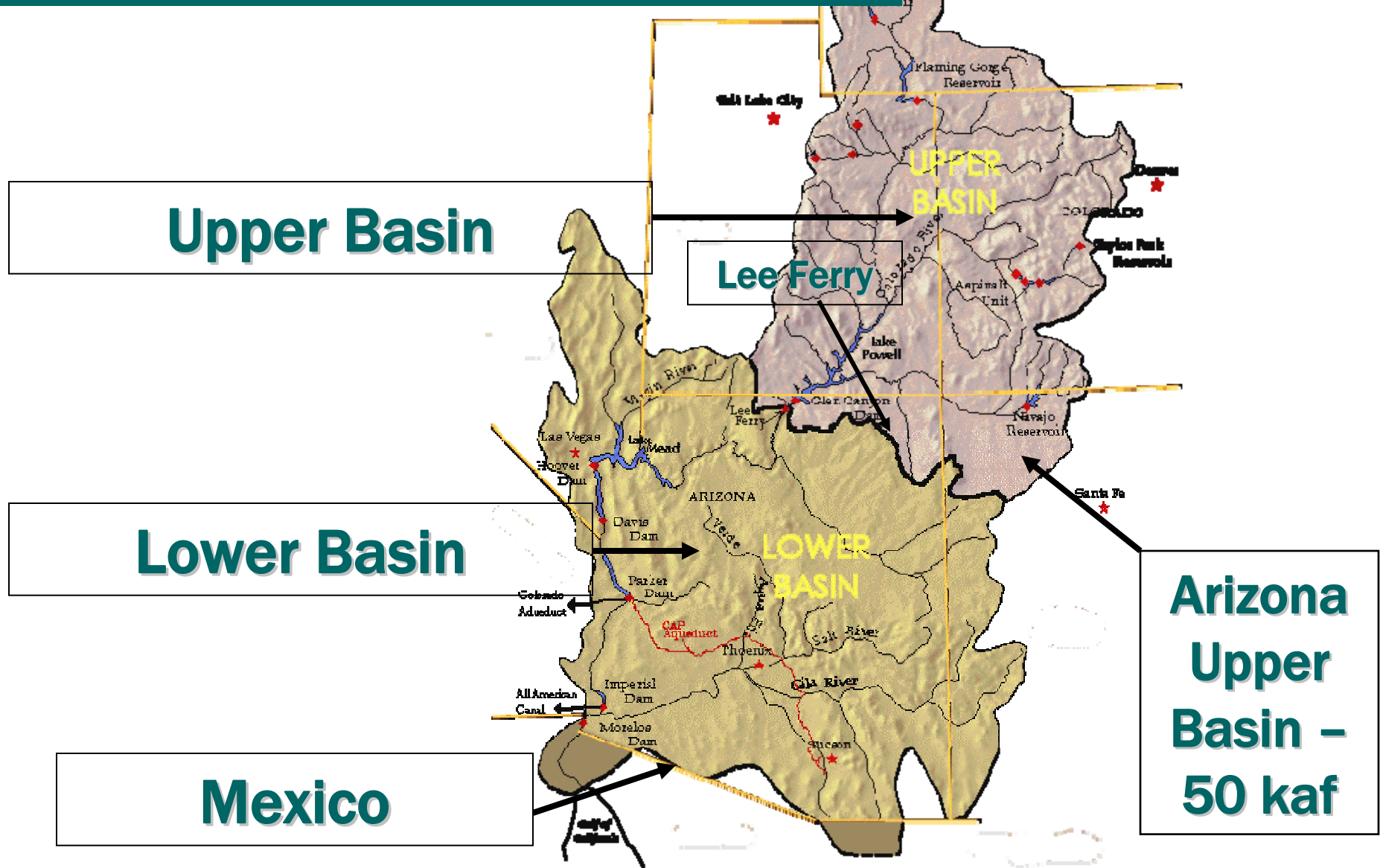


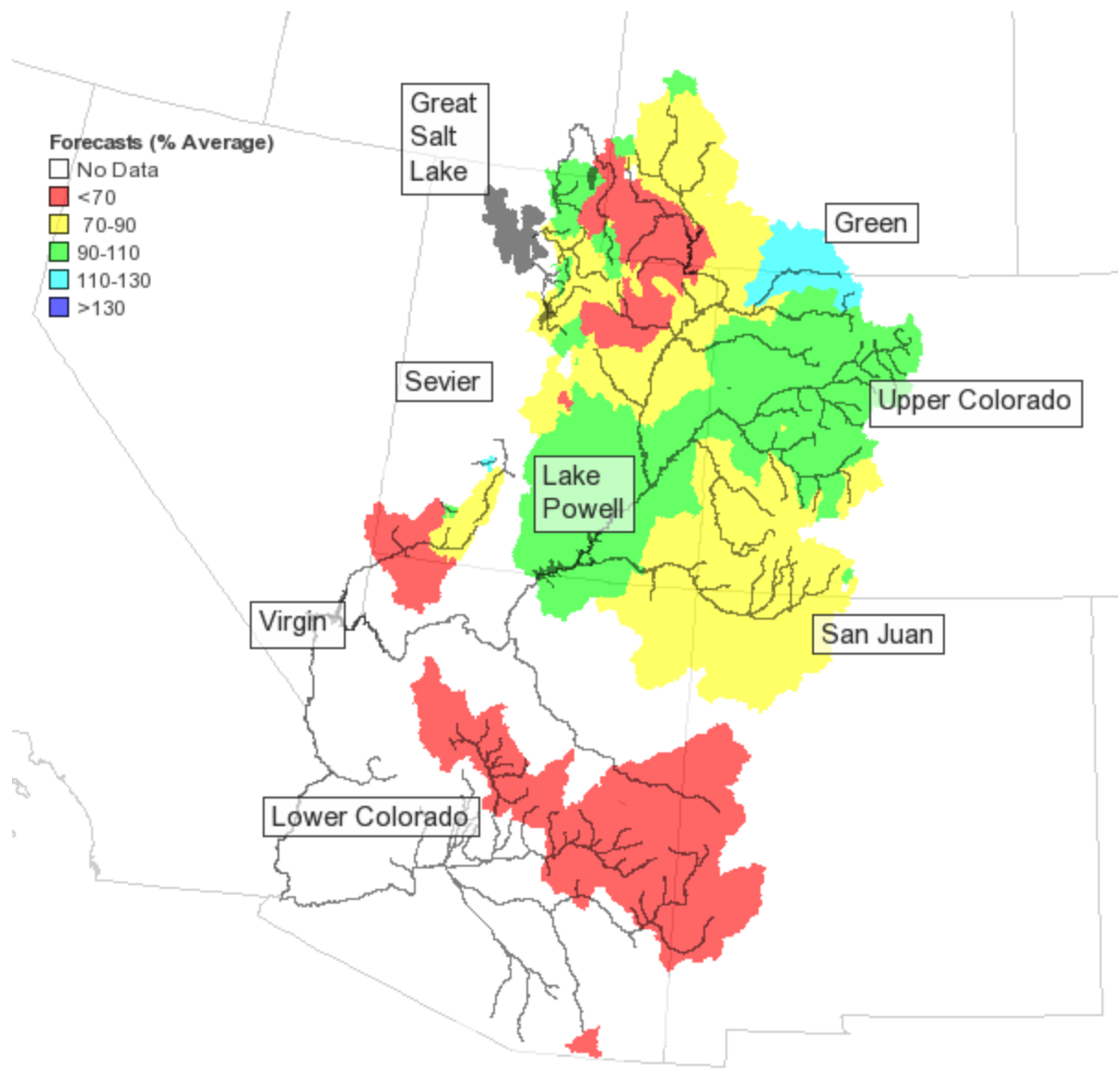
**Groundwater  
2.9 MAF**

**Salt River  
1 MAF**

**Gila River  
0.4 MAF**

# Colorado River Basin

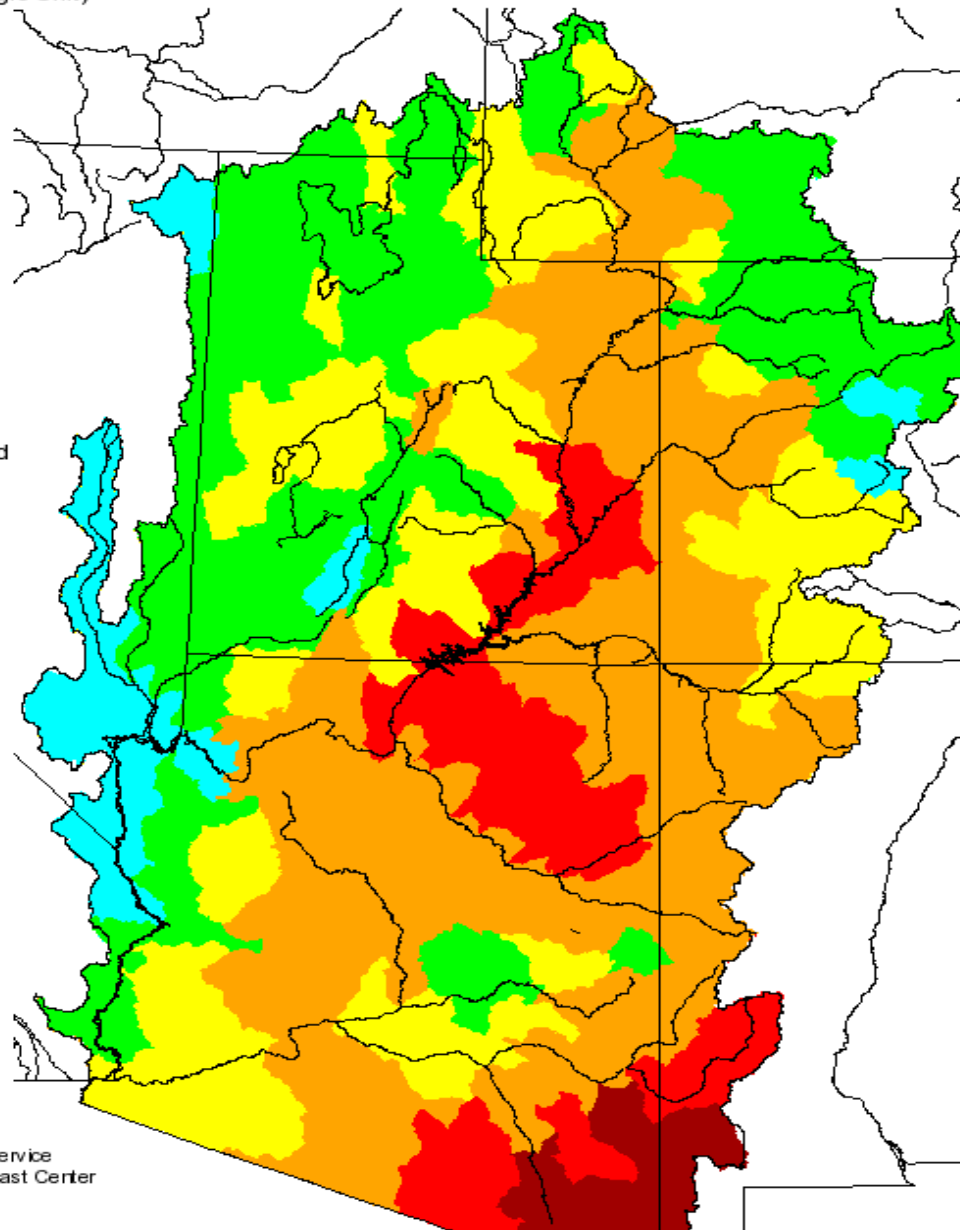
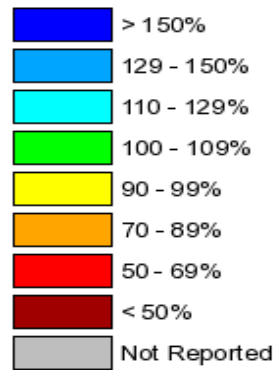




# Seasonal Precipitation, October 2008 - March 2009

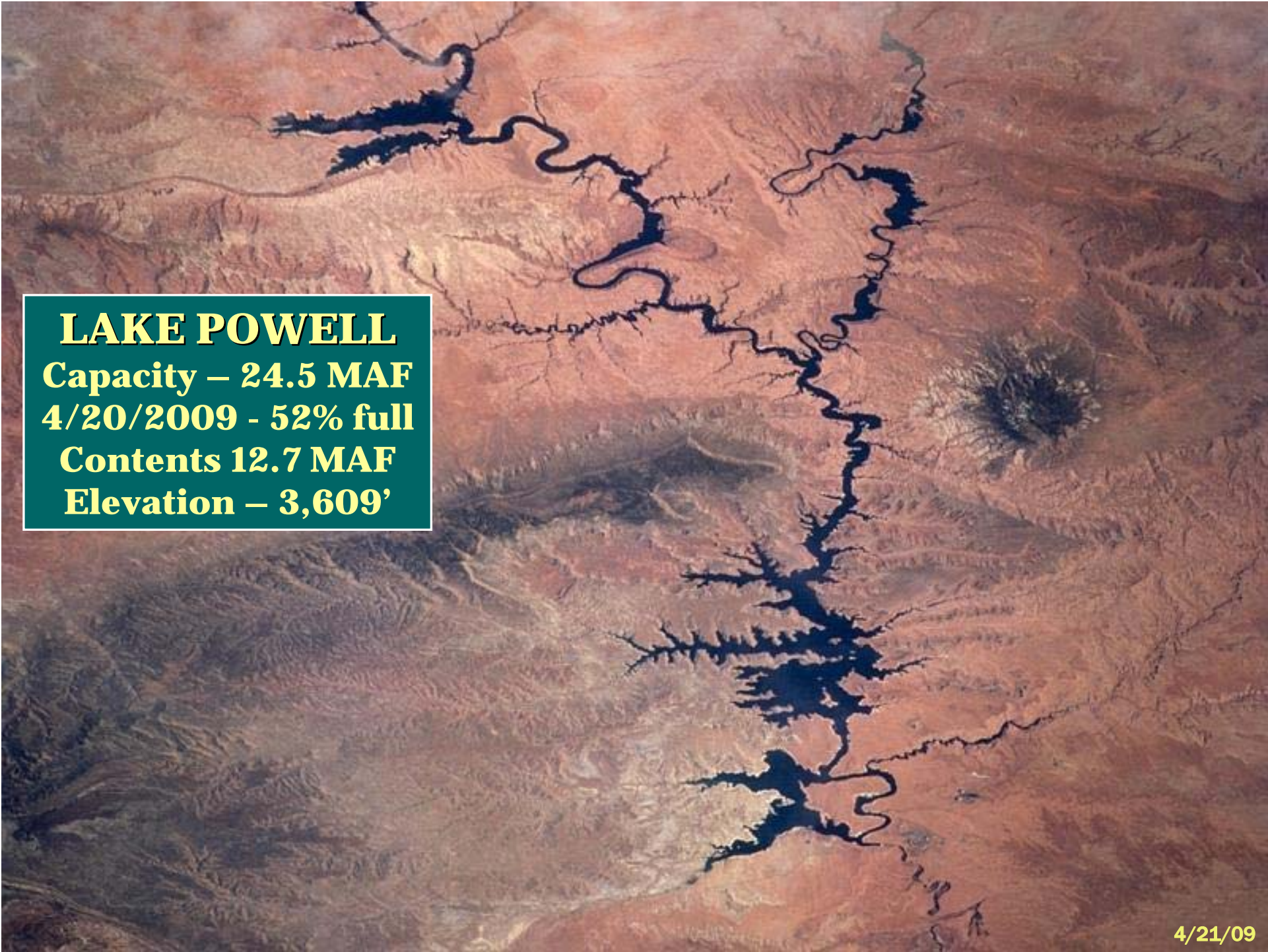
(Averaged by Hydrologic Unit)

## % Average



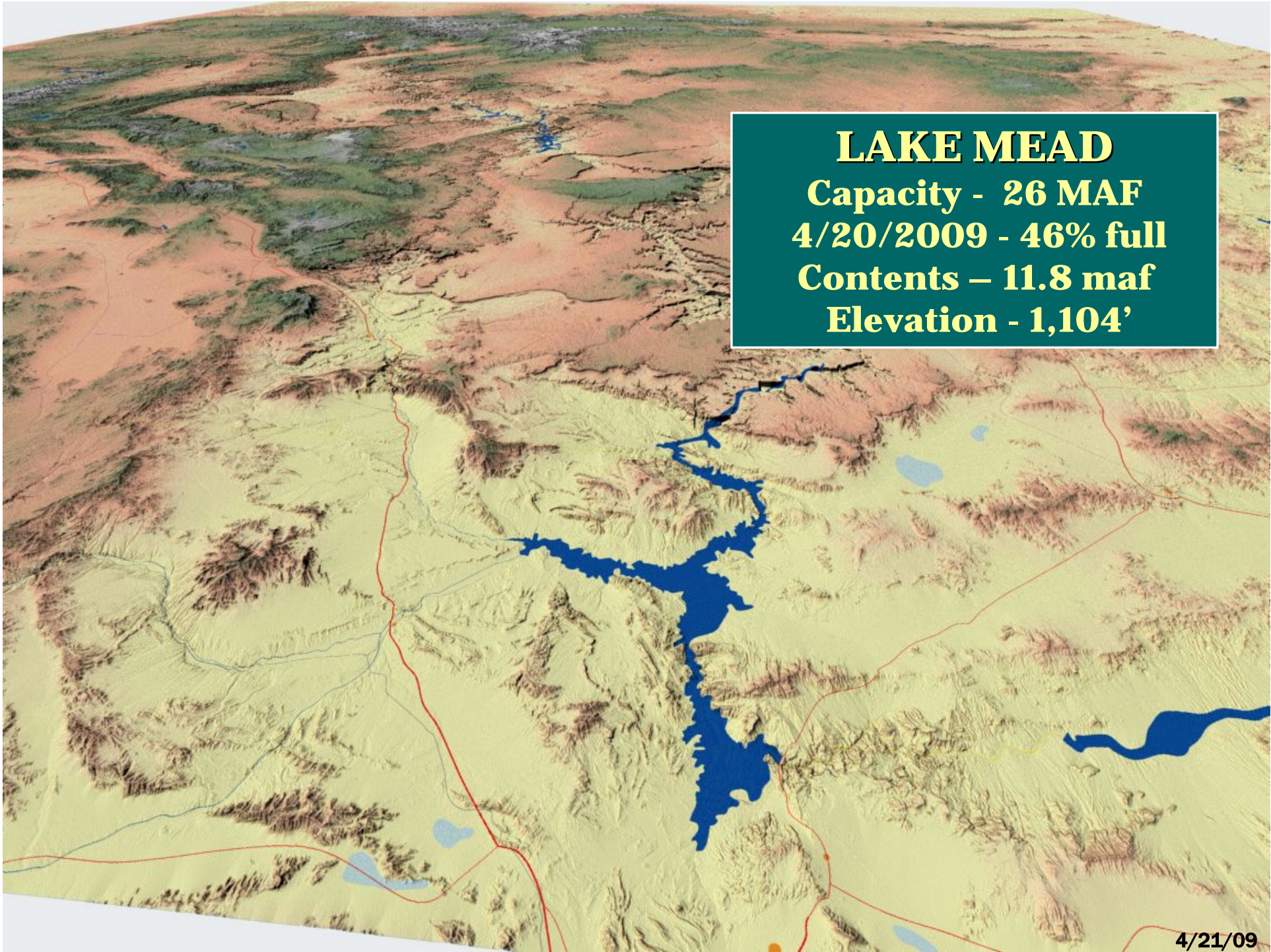
Prepared by  
NOAA, National Weather Service  
Colorado Basin River Forecast Center  
Salt Lake City, Utah  
[www.cbrfc.noaa.gov](http://www.cbrfc.noaa.gov)





**LAKE POWELL**  
**Capacity – 24.5 MAF**  
**4/20/2009 - 52% full**  
**Contents 12.7 MAF**  
**Elevation – 3,609'**





**LAKE MEAD**  
**Capacity - 26 MAF**  
**4/20/2009 - 46% full**  
**Contents – 11.8 maf**  
**Elevation - 1,104'**