

Governor's Drought Interagency Coordinating Group

Jeff Inwood

Colorado River Management
Arizona Department Of Water Resources

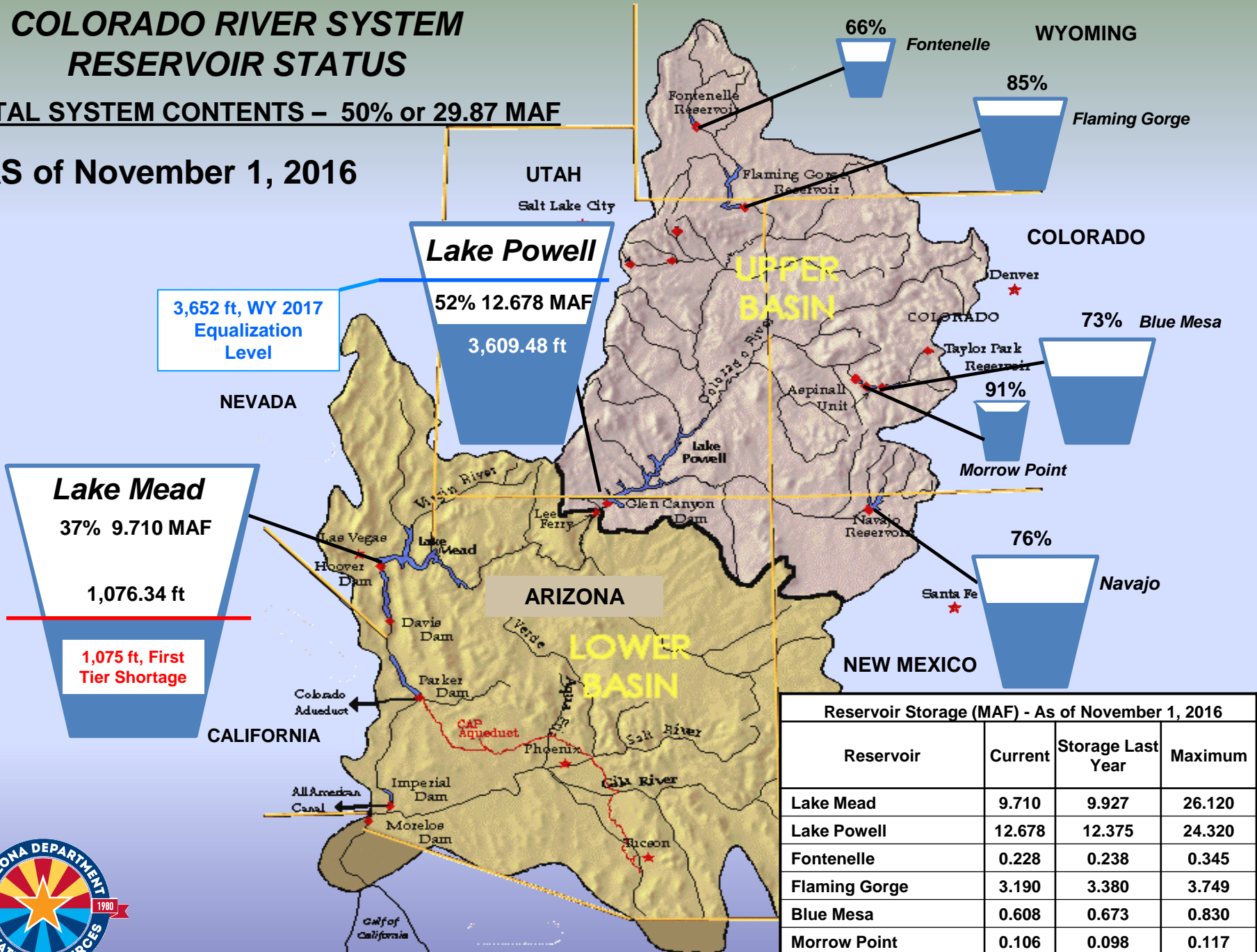
November 16, 2016



COLORADO RIVER SYSTEM RESERVOIR STATUS

TOTAL SYSTEM CONTENTS – 50% or 29.87 MAF

AS of November 1, 2016

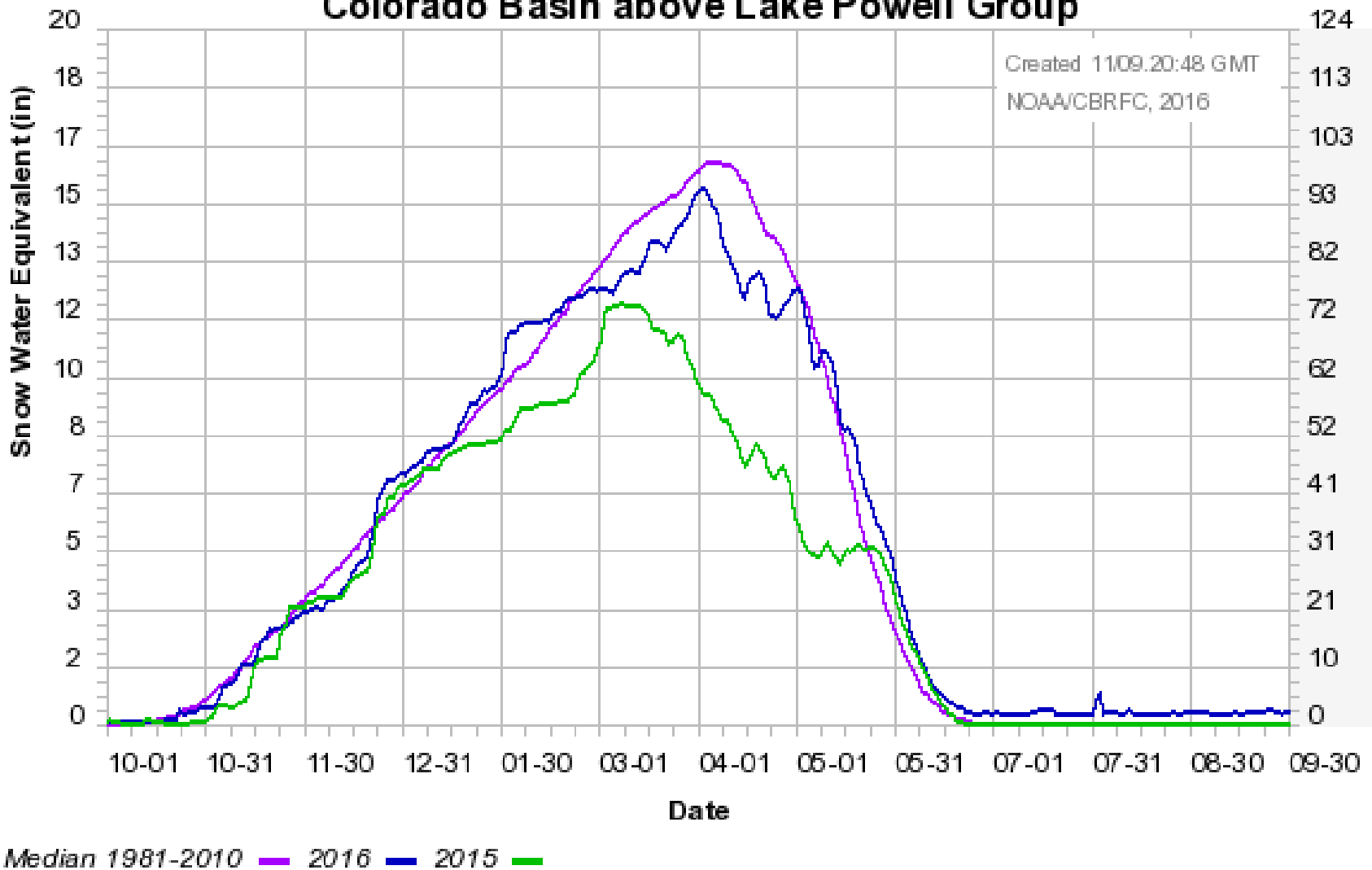


Reservoir Storage (MAF) - As of November 1, 2016			
Reservoir	Current	Storage Last Year	Maximum
Lake Mead	9.710	9.927	26.120
Lake Powell	12.678	12.375	24.320
Fontenelle	0.228	0.238	0.345
Flaming Gorge	3.190	3.380	3.749
Blue Mesa	0.608	0.673	0.830
Morrow Point	0.106	0.098	0.117
Navajo	1.300	1.390	1.700



Data Source: US Bureau of Reclamation

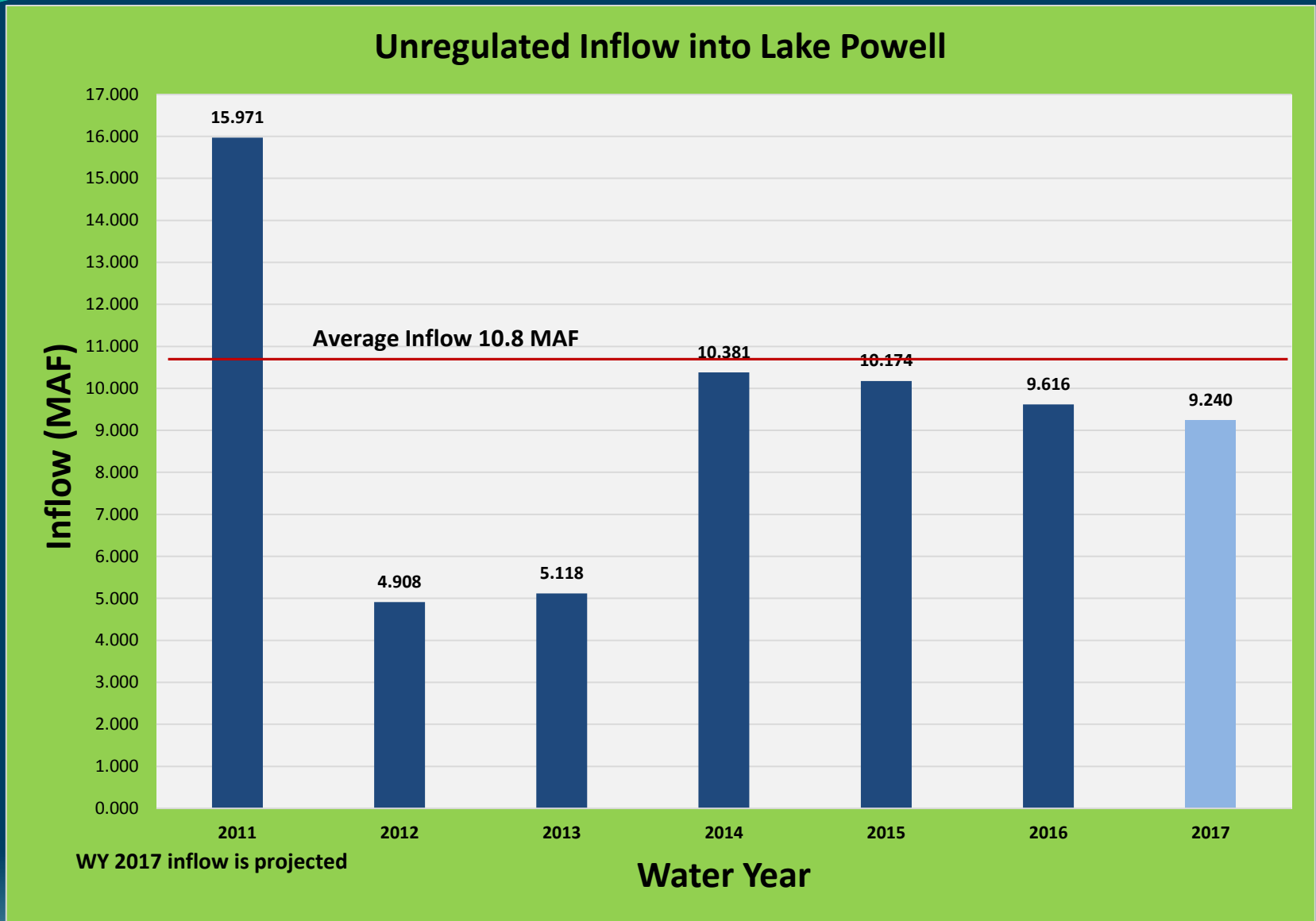
Colorado Basin River Forecast Center Colorado Basin above Lake Powell Group



Source: Colorado Basin River Forecast Center



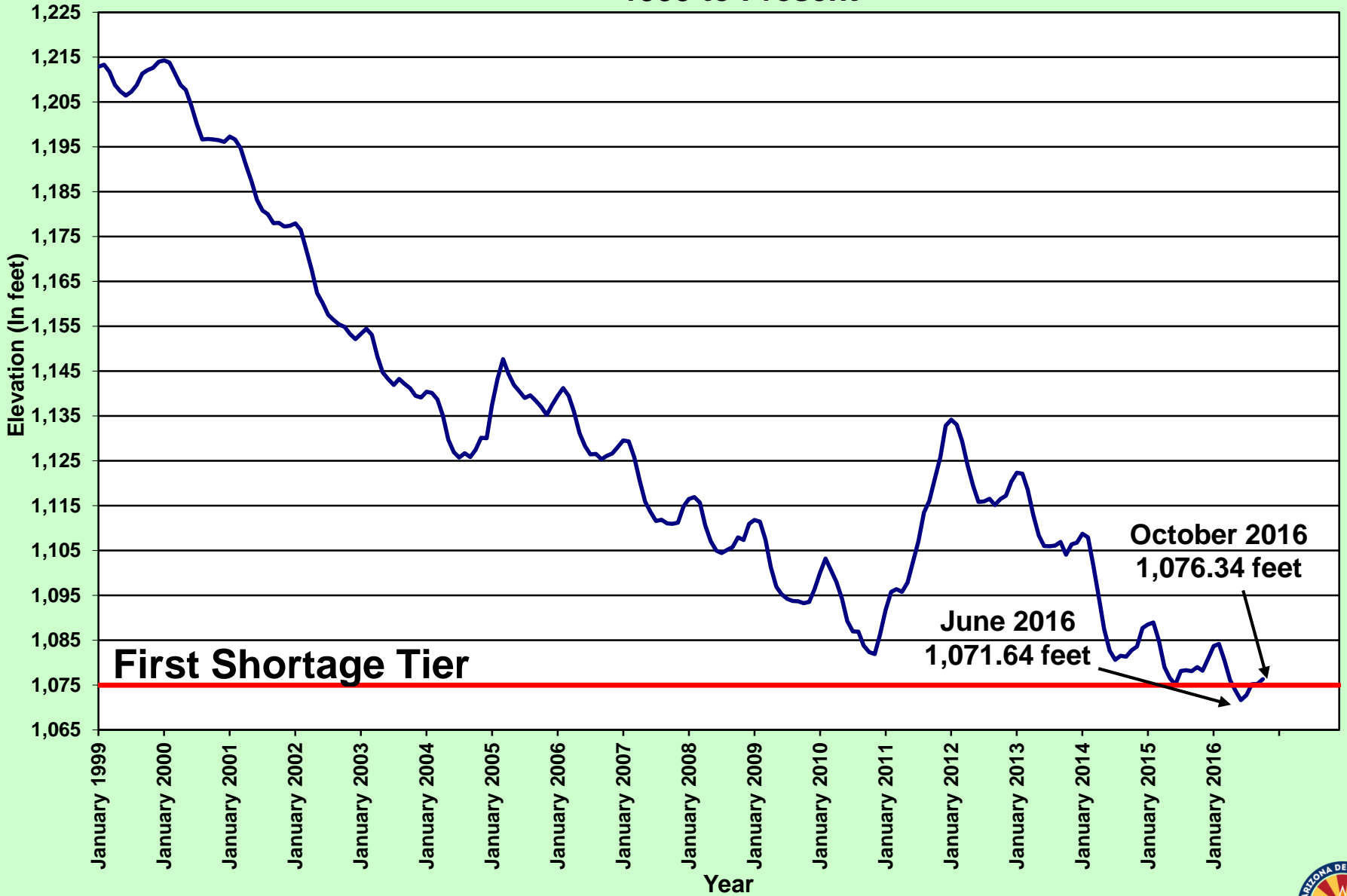
Unregulated Inflow WY 2011 - 2017



Source: United States Bureau of Reclamation



Lake Mead End of Month Elevation 1999 to Present



Probabilities of Lower Basin Shortage

	2017	2018	2019	2020	2021
Probability of any level of shortage (Mead \leq 1,075 ft.)	0	48	60	60	56
1 st level shortage (Mead \leq 1,075 and \geq 1,050 ft)	0	48	50	41	33
2 nd level shortage (Mead $<$ 1,050 and \geq 1,025 ft)	0	0	10	16	16
3 rd level shortage (Mead $<$ 1,025)	0	0	0	3	7

From Bureau of Reclamation August 2016 Colorado River modeling projections for 2017 through 2021.

LBDCP Water Use Reductions

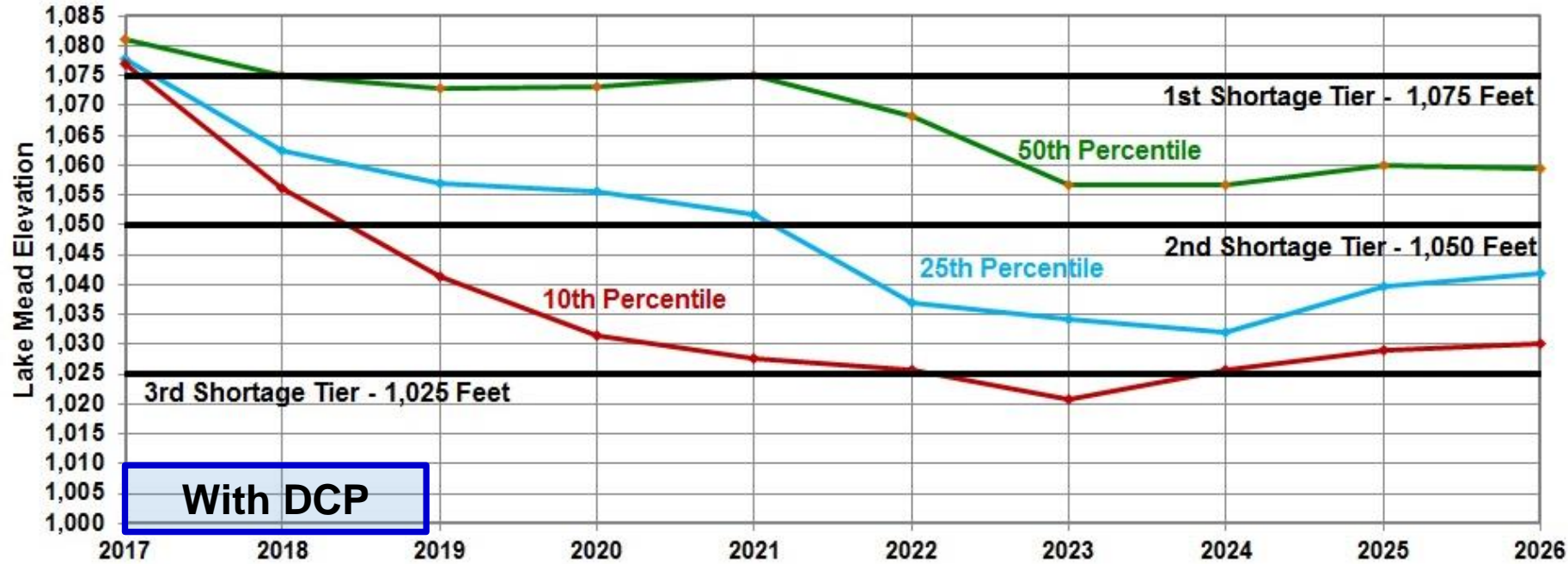
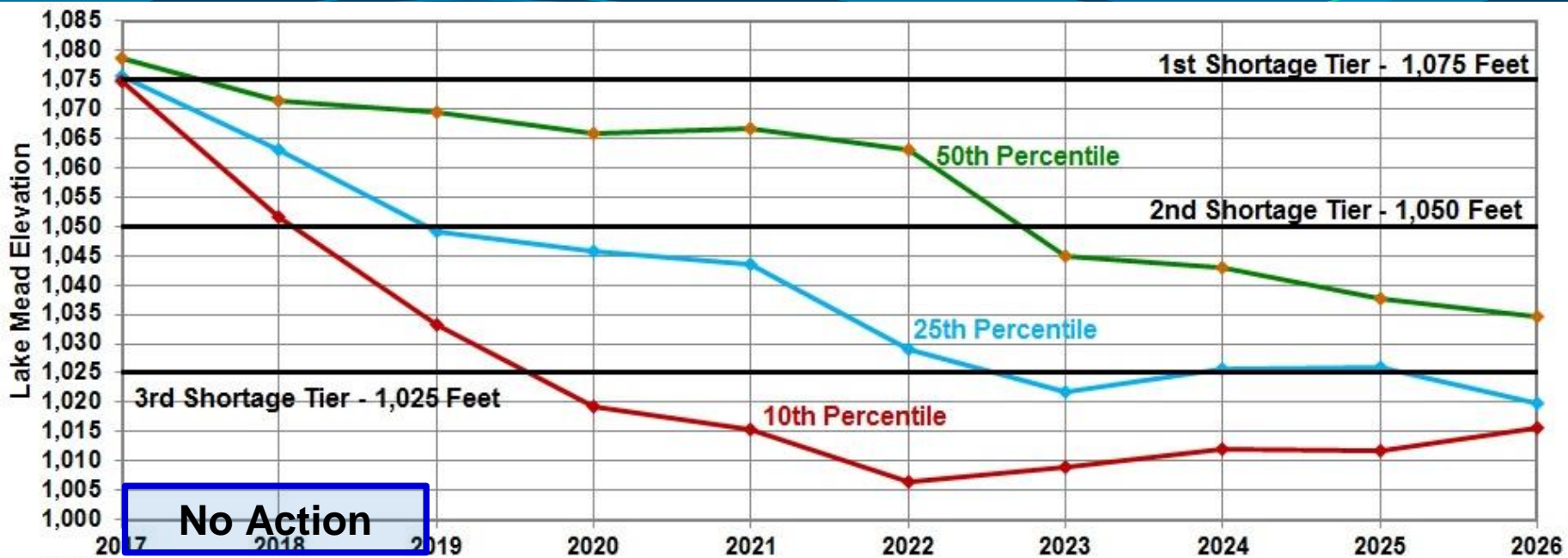
Lake Mead Elevation	AZ [2007]	AZ [Plan]	AZ TOTAL	NV [2007]	NV [Plan]	NV TOTAL	CA [2007]	CA [Plan]	CA TOTAL	BOR	TOTAL
1090-1075	0	192K	192K	0	8K	8K	0	0	0	100k	300k
1075-1050	320K	192K	512K	13K	8K	21K	0	0	0	100k	633k
1050-1045	400K	192K	592K	17K	8K	25K	0	0	0	100k	717k
1045-1040	400K	240K	640K	17K	10K	27K	0	200K	200K	100k	967k
1040-1035	400K	240K	640K	17K	10K	27K	0	250K	250K	100k	1,017k
1035-1030	400K	240K	640K	17K	10K	27K	0	300K	300K	100k	1,067k
1030-1025	400K	240K	640K	17K	10K	27K	0	350K	350K	100k	1,117k
<1025	480K	240K	720K	20K	10K	30K	0	350K	350K	100k	1,200k

Revised on 11/18/15 to include US and TOTAL reductions





Lake Mead – Selected Percentile Elevations Stress Test Hydrology – “No Action” and With DCP



Questions?

