



5<sup>th</sup> Management Plans  
**Agricultural Subgroup Meeting**

January 27, 2021

# Google Form

- Additional opportunity to provide input and feedback on items discussed in the meeting
- Questions are optional so you can choose what you'd like to provide input on
- Responses will be posted anonymously on our 5MP Concepts Webpage
- Please respond by 02/10/2021

Link to Google Form Questionnaire: <https://forms.gle/Akyy2KHSLRDLxor66>



# Agenda

- I. Introduction
  - I. Agricultural BMP Advisory Committee Update
  - II. BMP Lineage Analysis Update
- II. Status & Timeline for the 5<sup>th</sup> Management Plans
- III. Integrated Farm Program
- IV. Closing Remarks



# 5MP Agricultural Subgroup

## Previous Meetings

- \* Reviewed 4MP Conservation Program
- \* Reviewed Agricultural Data
- \* Reviewed Statutory Requirements and potential for modifications
- \* Introduction of the BMP Advisory Committee
- \* Introduced potential new Integrated Farm Program

## Next Steps for Future Meetings:

- \* Finalize initial framework of Integrated Farm Program
- \* Discussion of modifications to the BMP Program
- \* Discussion of 5% reduction of top 25% of water duties in each ASFC

## Next Meeting:

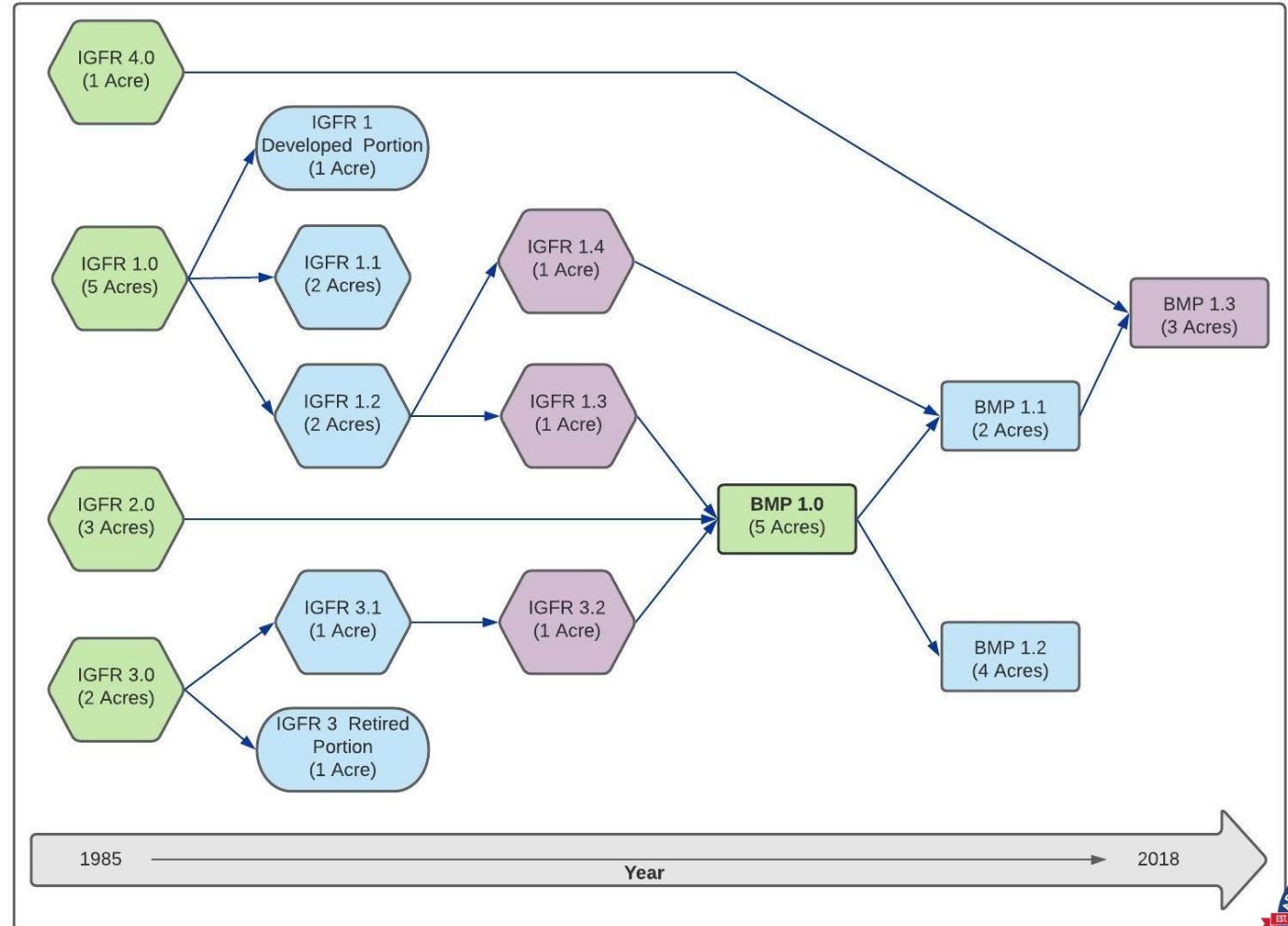


March 24, 2021 10am

# Update: Additional BMP Analysis

## BMP Lineage

- \* To better understand interaction between the two programs
  - \* Water use before and after an IGR entered the BMP Program
- \* Assist in understanding whether/how equivalency can be quantified
- \* Established methodology
- \* Preliminary results next meeting



# Update: BMP Committee

## Progress

### Meetings:

- \* 12/9/2020: Purpose, scope, history of committee
- \* 1/13/2021 : Review of individual BMPS, Timeline Discussion

## Next Steps

- \* ADWR Public Meetings Calendar for future meetings:  
<https://new.azwater.gov/meetings>
- \* Committee Membership
- \* Continued discussion of Individual BMPs
- \* Potential modifications to BMP program structure



# Status and Timeline of 4<sup>th</sup> and 5<sup>th</sup> Management Plans



# Status and Timeline of 4<sup>th</sup> & 5<sup>th</sup> Management Plans

**4MP**

Phoenix  
AMA  
Adoption  
2020

Pinal AMA  
Adoption  
2020

Santa Cruz  
AMA  
Adoption  
2020

MPWG  
2019-2021

Drafting Plans  
2021-2022

Adopting  
Plans  
2022

Plans Effective  
2025

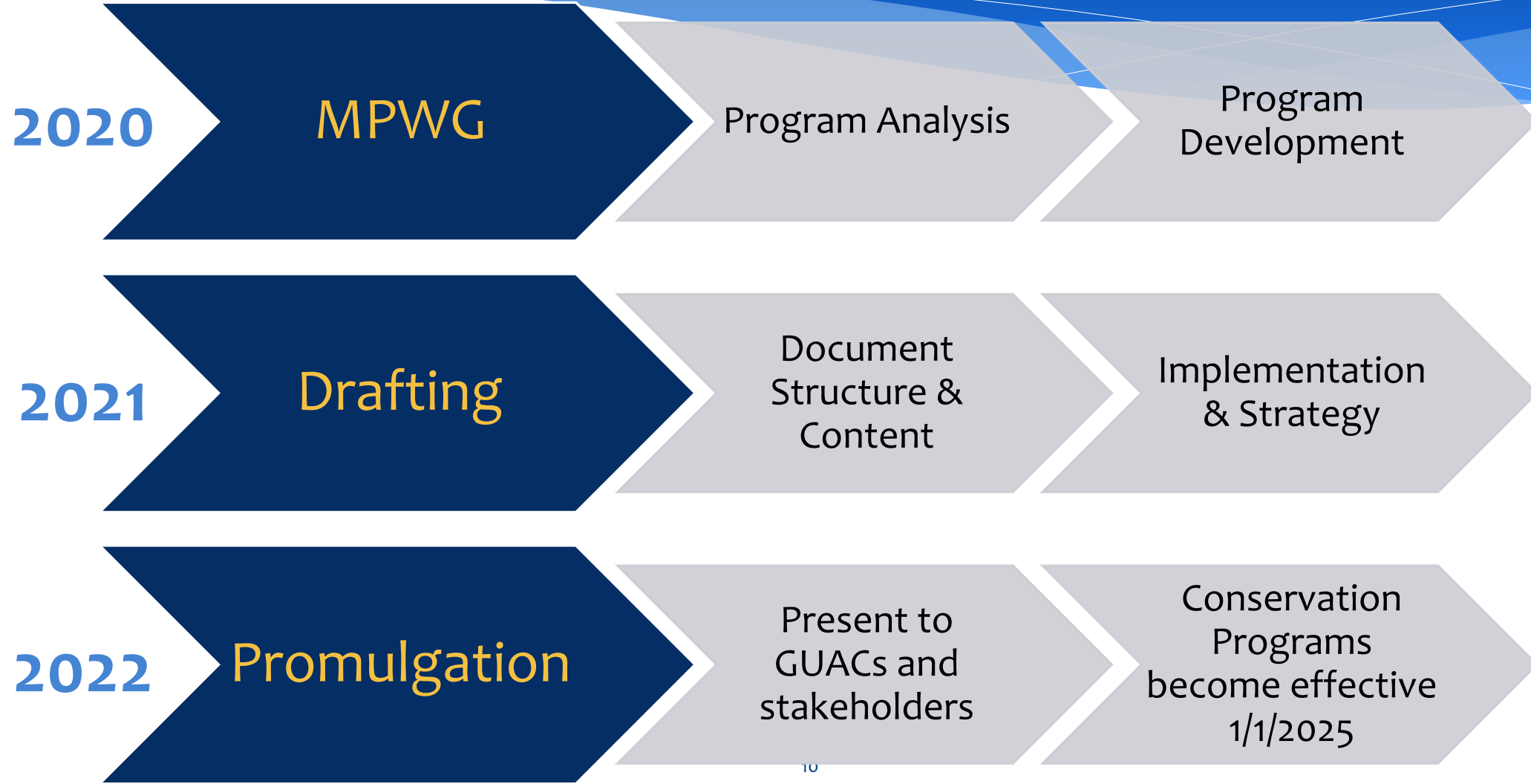
**5MP**





# Estimated 5MP Timeline

[new.azwater.gov/5MP](http://new.azwater.gov/5MP)



# BMP Committee: Potential Work Plan/Timeline

Topic (BMP Committee)	Meetings
Discussion of each BMP & Category <ul style="list-style-type: none"> <li>• Technical Accuracy of BMPs</li> <li>• Improvements/Updates</li> <li>• Individual Points Values &amp; Accumulation</li> <li>• BMP Categories &amp; Points Requirements</li> </ul>	January 2021 February 2021
5MP Structure <ul style="list-style-type: none"> <li>• Tier Proposal</li> <li>• Points target(s)</li> </ul>	March 2021
Analysis of BMP Program <ul style="list-style-type: none"> <li>• Consistency with statutory requirements</li> <li>• BMP Lineage Analysis</li> </ul>	March 2021 April 2021

## Proposal:

- Monthly meetings
- Deadline for recommendations to meet 5MP timeline: beginning of May



# 5MP Ag Subgroup: Potential Work Plan/Timeline

Topic (5MP Ag Subgroup)	Meetings
Discussion of Integrated Farm Program <ul style="list-style-type: none"><li>• Geographic Limitations</li><li>• Cut to the Aquifer</li><li>• Flex Credits</li></ul>	January 2021 March 2021
Discussion of Reduction of Top 25% of Water Duties	March 2021
Discussion of BMP Program <ul style="list-style-type: none"><li>• Recommendations from the Ag BMP Advisory Committee</li></ul>	May 2021



# Drafting Logistics

- \* All 5 Fifth Management Plans will be drafted simultaneously
  - \* Structure will largely match across AMAs
  - \* Time for AMA Customization
- \* Subgroups will reconvene as needed to review draft regulatory language
  - Goal: Publication of Initial Drafts in early 2022



# Questions & Comments:



# Proposal for Alternative Conservation Program: Integrated Farm Program



# Alternative Agricultural Conservation Programs

A.R.S. § 45-568.02(F)

*“The director may include in the adoption of, or a modification to, the management plan for the fifth management period additional alternative agricultural conservation programs that the director determines achieve conservation that is at least equivalent to that required under [the Base Program]...”*



# Potential 5MP: Integrated Farm Program

## Concept

- \* Allotment based program
- \* Allows multiple IGFRs under the same owner/operator to combine reporting/allotments
- \* Will include a "cut to the aquifer" percentage reduction of the total combined allotment.

## To Be Determined

- \* Geographic limitations
  - \* Contiguous
  - \* Irrigation District
  - \* Sub-Basin
- \* "Cut to the Aquifer" Percentage
- \* Process for joining/leaving
- \* Management of flex credits





# 5MP Agricultural Conservation Programs

## Base Program

- Allocation based, default Program

Proposed

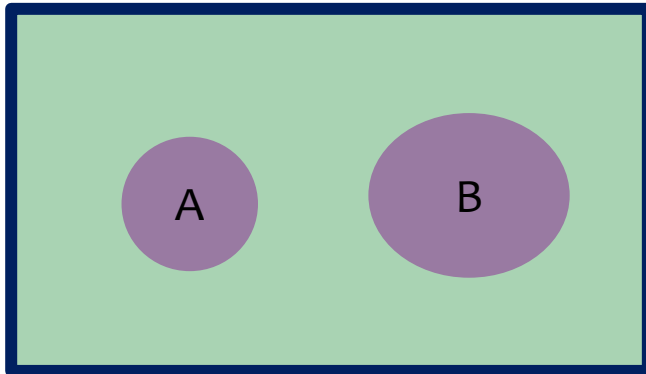
## Integrated Farm Program

- Removes Administrative Burden of Base Program

## BMP Program


- Most Efficient, Highest Conservation Farms

# Potential Alternative Conservation Program: Integrated Farm Program



Base Program	Integrated Farm Program	BMP Program
Single Right Allotment	Combined Allotments	No Allotment
Single Right Reporting	Combined Reporting	Combined Reporting

## Legend

 Irrigation Right, same owner/operator

# Basic Structure

## Concept

- \* Allotment Based
- \* Combined Reporting
- \* Use of allotment on any right in the program, as user sees fit
- \* Cut to aquifer

## Feedback Examples

- \* May be administratively difficult to combine leases with different ownership type (e.g. State land)
- \* Many farms are already administratively managed as one, rather than individual rights
- \* Reduces administrative burden for those farming multiple IGRs or for districts reporting on behalf of IGRs

# Geographic Limitations

## Concept

- \* How will IGRs be able to be combined under the Integrated Farm Program

## Potential Options

- \* Irrigation District
- \* Sub basin
- \* Similar to BMP Program Farm Unit
  - \* Contiguous, within 1/2 mile
  - \* Common distribution system
- \* Combination :
  - \* District if within a district
  - \* Sub-basin if not within a district
- \* Allow options
  - \* Different cut to aquifer depending on geographical limitation

# Cut to the Aquifer Percentage

## Concept

- \* IFP would include a "cut to the aquifer" percentage reduction of the total combined allotment
- \* Included to ensure that statutory requirements are met:
  1. Reductions in withdrawals of groundwater
  2. "... achieve conservation that is at least equivalent to that required under [the Base Program]..."
- \* Needs to also be set a level that would not discourage participation

## Potential Options

- \* One rate across the program
- \* AMA level customization
- \* Dependent on geographic limitation
  - \* Larger geographic limitation, larger cut to aquifer
- \* Allow options
  - \* Larger geographic limitation, larger cut to aquifer
  - \* Different cut to aquifer depending on geographical limitation
  - \* Different cut depending on flex credits management

# Management of Flex Credits

## Concept

- \* Once IGR is enrolled in the program, how would flex accounts be accounted for

## Potential Options

- \* Flex Credit Accumulation is frozen
- \* Use permitted up to full allotment under the base program
- \* Flex credits are combined and split proportionally
- \* Allow options
  - \* Different cut depending on flex credits management

# Process for Joining/Leaving

## Concept

- \* How owner/operators would enroll their IGRs in the program
- \* How owner/operators would disenroll their IGRs in the program

## Potential Options

- \* Application to join
- \* Must not have debit in excess of 50% of annual groundwater allotment upon entrance
- \* Similar Opting out process as BMP

# Closing Remarks





# 5MP Agricultural Subgroup

## Previous Meetings

- \* Reviewed 4MP Conservation Program
- \* Reviewed Agricultural Data
- \* Reviewed Statutory Requirements and potential for modifications
- \* Introduction of the BMP Advisory Committee
- \* Introduced potential new Integrated Farm Program

## Next Steps for Future Meetings:

- \* Finalize initial framework of Integrated Farm Program
- \* Discussion of modifications to the BMP Program
- \* Discussion of 5% reduction of top 25% of water duties in each ASFC

## Next Meeting:



March 24, 2021 10am

# Questions?

[managementplans@azwater.gov](mailto:managementplans@azwater.gov)

Management Plans Work Group:  
[new.azwater.gov/5MP](http://new.azwater.gov/5MP)

Full Text of Management Plans:  
[new.azwater.gov/ama/management-plans](http://new.azwater.gov/ama/management-plans)

