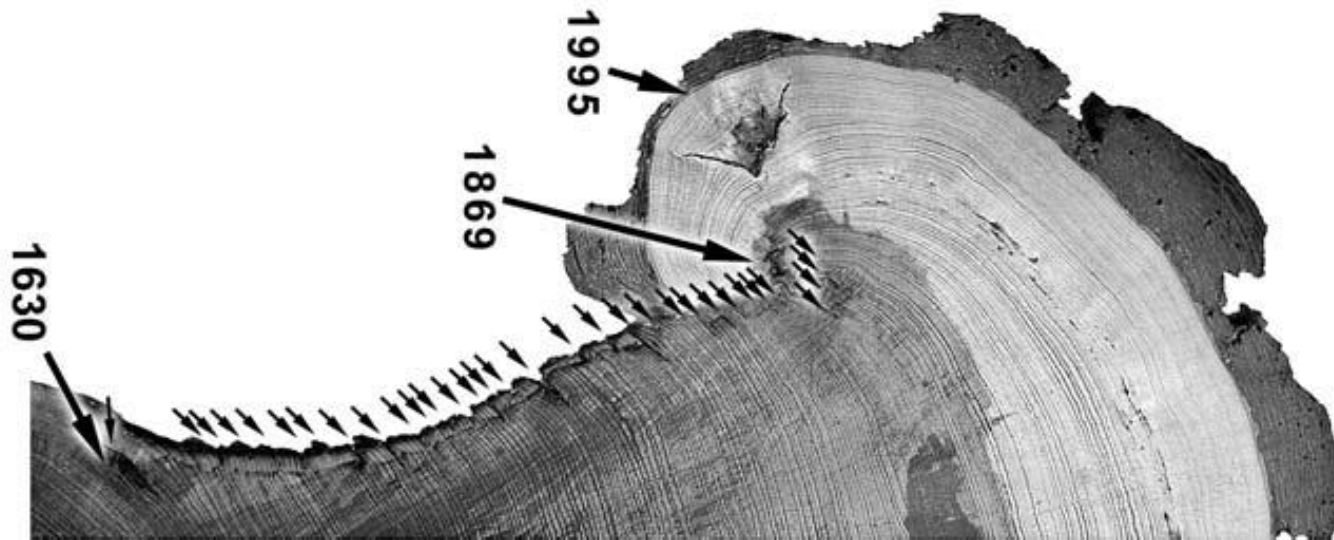


Governor's Drought Interagency Coordinating Group 2016 Wildfires and 2017 Outlook

Jeff Whitney, State Forester



Arizona Department of Forestry and Fire Management

2016 Fire Season

- 2016 Statewide area burned all jurisdictions : 303,057 Acres
- 2016 Statewide number of fires: 2,197 Fires
- 2015 Statewide area burned all jurisdictions : 158,493 Acres
- 2015 Statewide number of fires: 1,543 Fires
- 10 year average acres (2005-2014): 317,781 Acres
- 10 year average fires (2005-2014): 2,144 Fires



2015 Fire Season Large Fires

<u>Incident</u>	<u>Type</u>	<u>Unit</u>	<u>Status</u>	<u>Acres</u>
<u>Cedar Fire</u>	Wildfire	<u>Fort Apache Agency</u>	Active	45,977
<u>Jack Fire</u>	Wildfire	<u>Coconino National Forest</u>	Inactive	33,850
<u>Juniper Fire</u>	Wildfire	<u>Tonto National Forest</u>	Inactive	30,631
<u>Brown Fire</u>	Wildfire	<u>Arizona State Forestry</u>	Inactive	15,436
<u>Fuller Fire</u>	Wildfire	<u>Grand Canyon National Park</u>	Active	14,541
<u>Mormon Fire</u>	Wildfire	<u>Coconino National Forest</u>	Inactive	7,892
<u>Bert Wildfire</u>	Wildfire	<u>Kaibab National Forest</u>	Inactive	5,983
<u>Pivot Rock Fire</u>	Wildfire	<u>Coconino National Forest</u>	Inactive	5,964
<u>Baca Fire</u>	Wildfire	<u>Arizona State Forestry</u>	Inactive	4,140
<u>Tenderfoot Fire</u>	Wildfire	<u>Phoenix District</u>	Inactive	4,087



Factors Affecting Fire Potential

- Drought
- Fine Fuel Condition
- Seasonal Temperature and Precipitation
- Spring and Early Summer Weather
- Monsoon



Arizona's Forests and Forests Throughout the West: Extreme Fire Danger Persists



1901 Near Kendrick Mountain Shows Historical Spacing of Trees

“We came to a glorious forest of lofty pines, through which we have traveled ten miles. The country was beautifully undulating...every foot being covered with the finest grass, and beautiful broad grassy vales extending in every direction. The forest was perfectly open and unencumbered with brush wood, so that the traveling was excellent.”

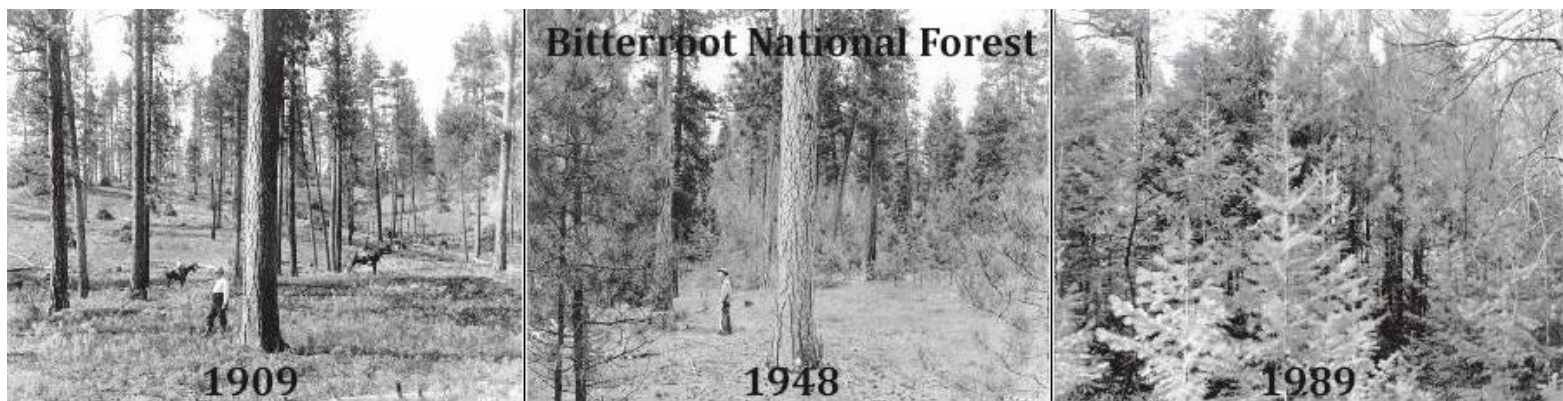
E.F. Beale expedition, 1858



Arizona Department of Forestry and Fire Management

Arizona's Forests and Forests Throughout the West: Extreme Fire Danger Persists

- Under pre-settlement conditions, healthy Arizona forests consisted of about 50 trees per acre.
- Today, that same acre supports up to 1,000 trees.
- Much of that growth is small diameter trees which, due to competition for nutrients and water, are much less healthy, highly susceptible to insect infestation and disease, and have become a substantial fuel load for wildfires.



Arizona Department of Forestry and Fire Management

Arizona State Forestry Division

Thank You

Contact information:

Jeff Whitney, State Forester

602-771-1400 Office

jeffwhitney@azsf.gov

www.azsf.gov



Arizona State Forestry