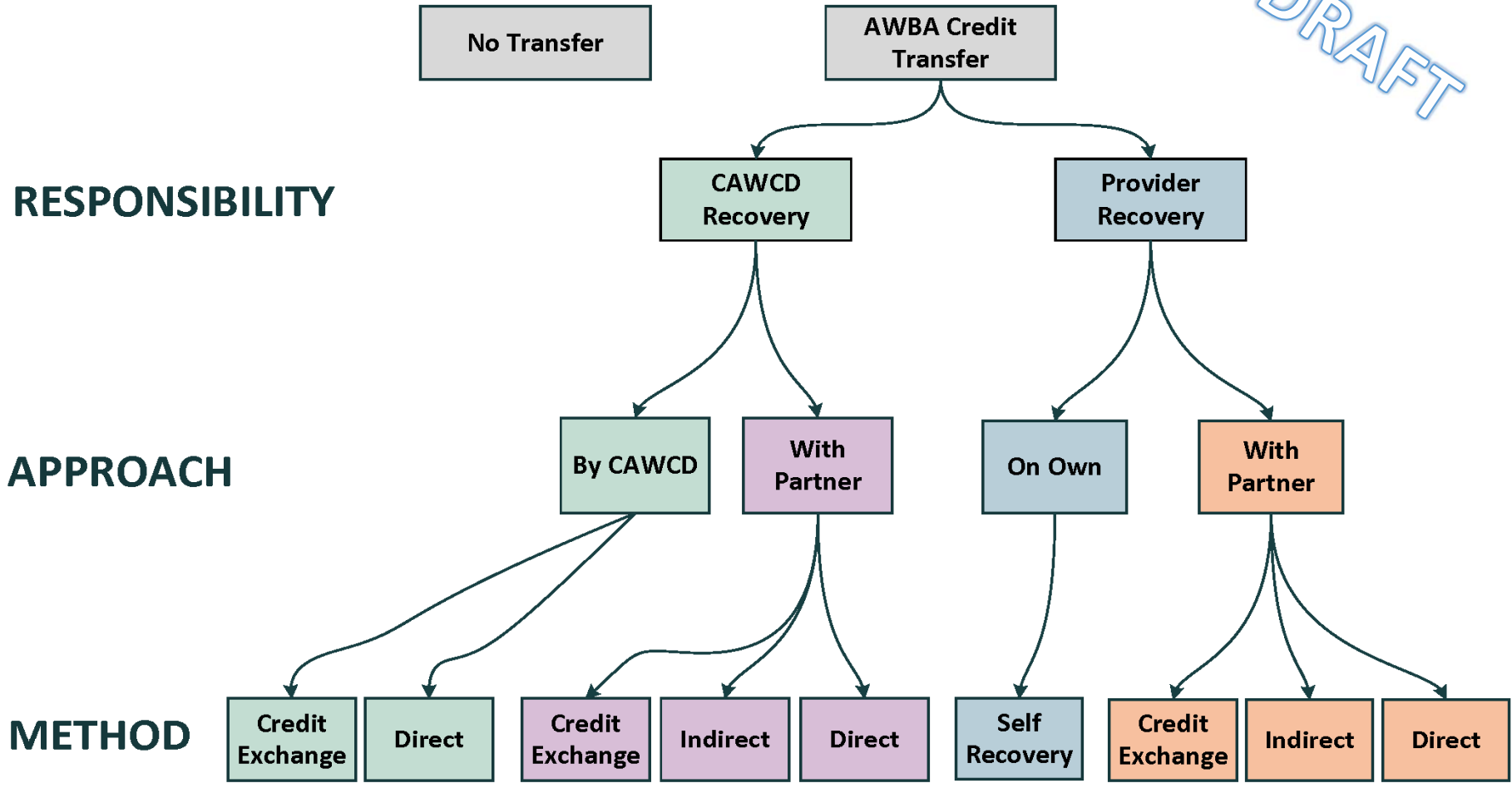


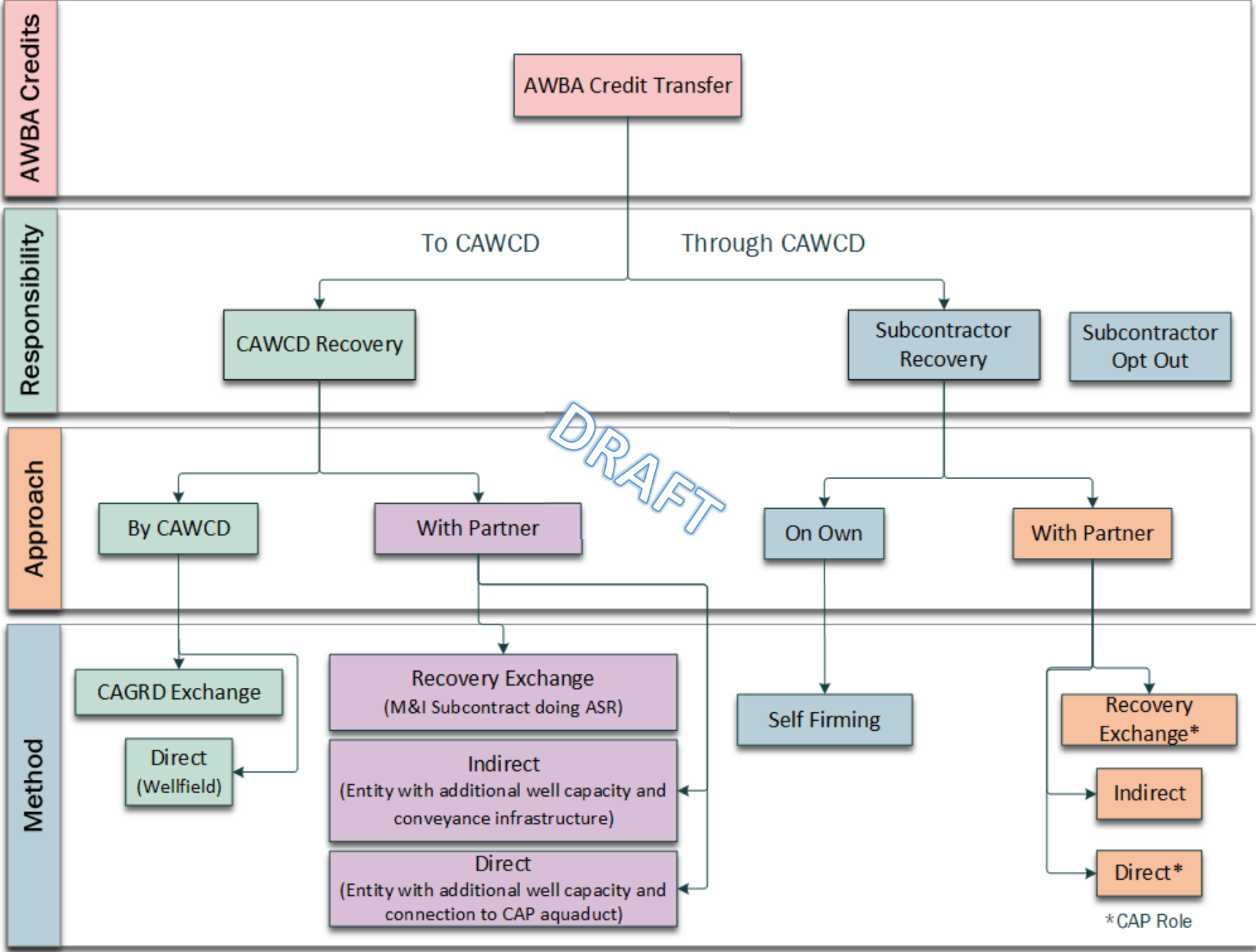
DRAFT

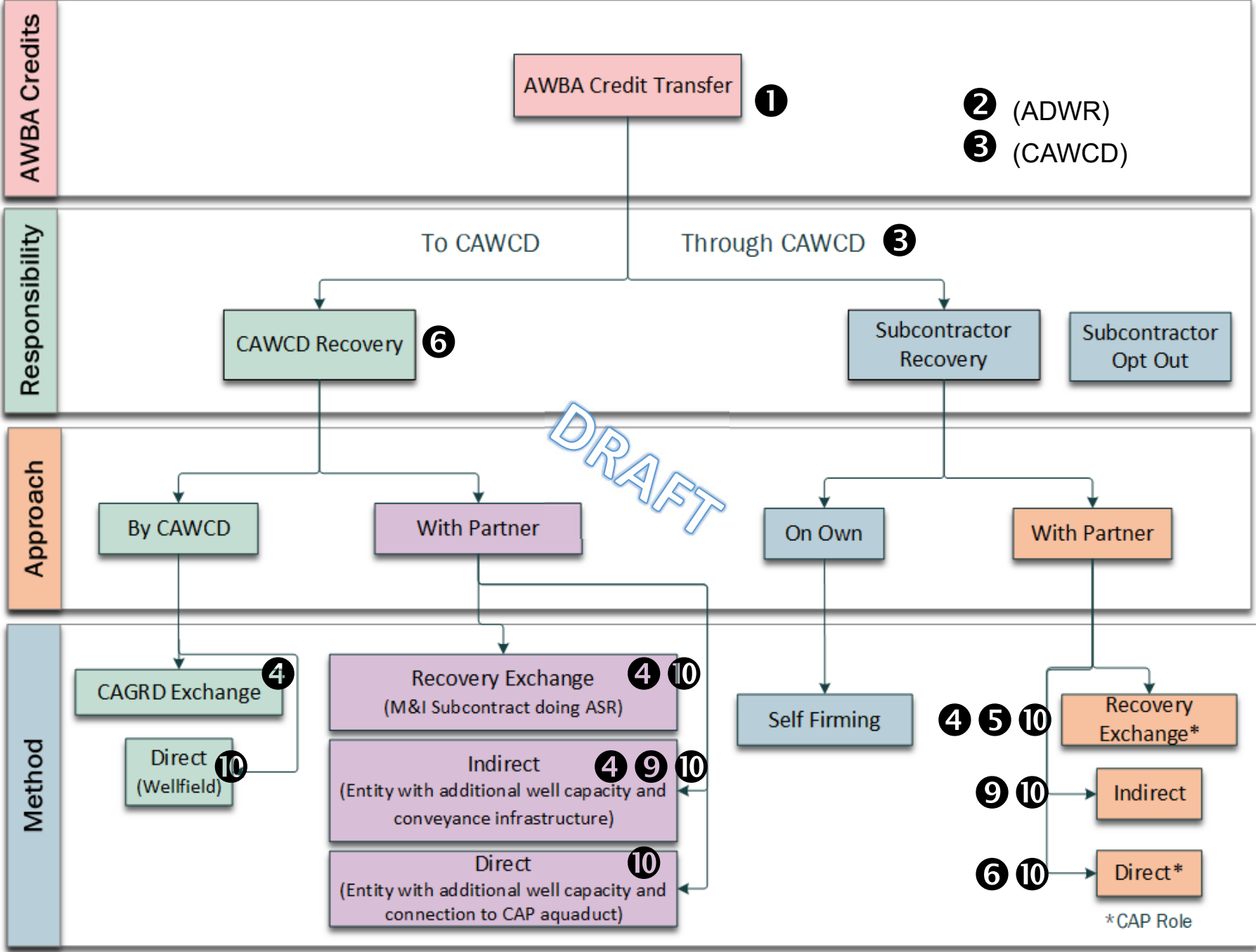


RESPONSIBILITY

APPROACH

METHOD





Recovery Policies, Procedures and Agreements

(in alphabetical order)

- 1) **AWBA credit distribution policy/procedure**—[AWBA]
 - Determination of credit locations
 - Relationship to CAP orders
 - Status of 20%
- 2) **AWS drought exemption**—[ADWR]
 - >20% M&I shortages
 - Relationship to entire CAP portfolios
- 3) **CAWCD credit pass-through policy/procedure**—[CAWCD]
 - Transfer fee?
- 4) **Exchange Agreements**—[SUA & ARS]; Exchange Parties, with USBR and CAWCD approval]
 - “9.2 Exchanges between Non-Federal Long-Term Contractors and parties holding Non-Project Water supplies”
- 5) **Exchange Implementation Agreements**—[SUA]; CAWCD & Exchange Parties]
 - Cost collection; indemnification
- 6) **Firming Agreements**—[SUA]; Firmed Party & CAWCD]
 - Cost collection; indemnification
- 7) **M&I shortage allocation methodology**—[AWSA]; CAWCD]
 - Orders vs. Entitlements
- 8) **Notice of Exchange**—[ARS]; Exchange Parties & ADWR approval]
- 9) **Recovery partner agreements**—[Firmed party & partner]
 - 2-party agreements specifying terms of delivery of recovered water
- 10) **Recovery Well Permits**—[ARS]; Firmed Party or Partner or CAWCD]
 - For production of a Non-Project Water supply (i.e., recovered CAP water) that can be delivered directly, indirectly or by exchange
- 11) **Other?**

DRAFT