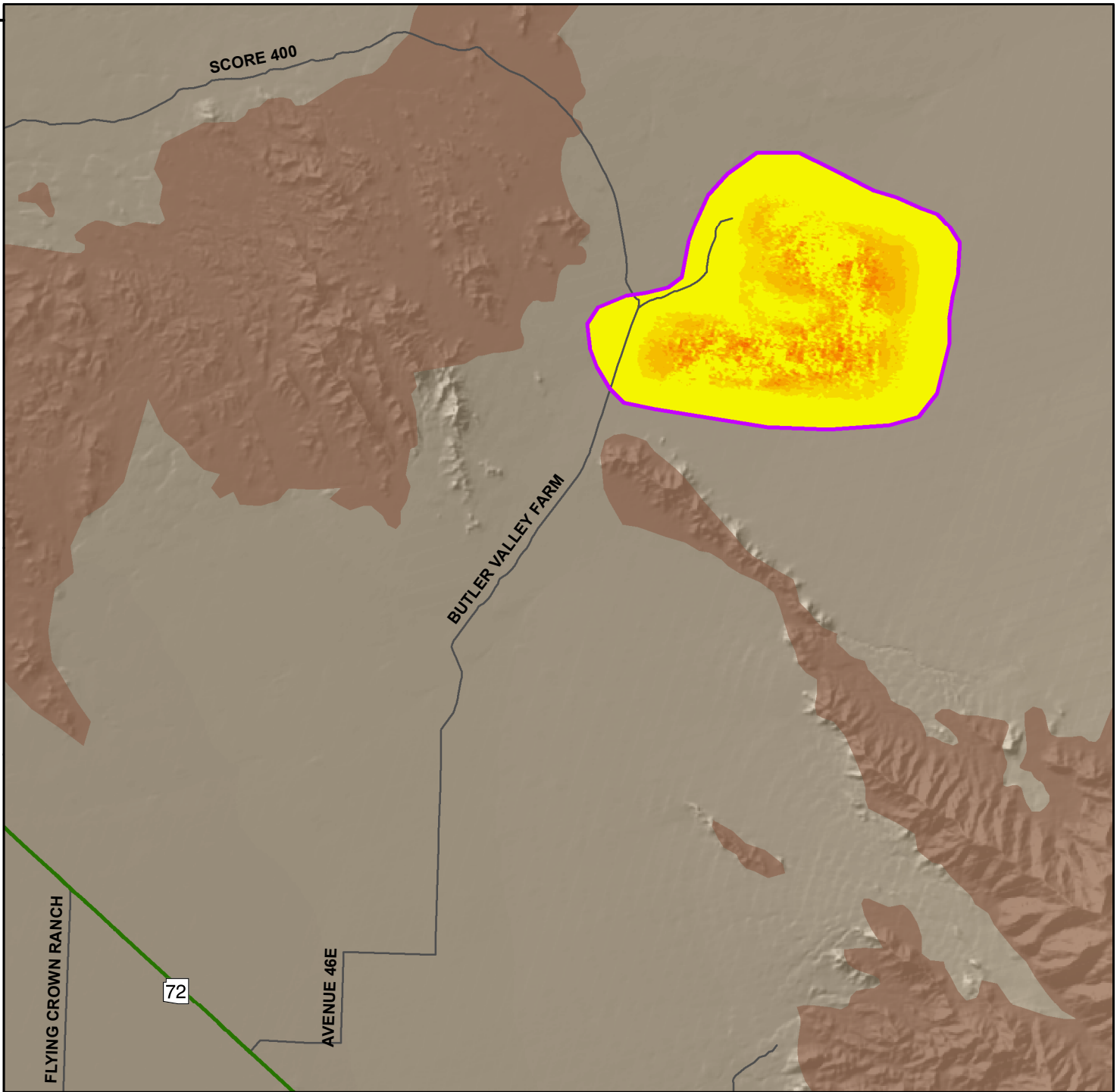


34°00'N



Land Subsidence in the Butler Valley Area, La Paz County
 Based on Sentinel-1 Satellite Interferometric Synthetic Aperture Radar (InSAR) Data
 Time Period of Analysis: 1.0 Years 02/07/2018 To 02/24/2019

© ESA 2018 - 2019
 © ASF 2018 - 2019

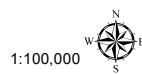
Explanation

02/07/2018 To 02/24/2019

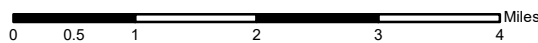
Total Land Subsidence

- Decorrelation/No Data
- Greater 40 cm (15.7 in)
- 25 - 40 cm (9.8 - 15.7 in)
- 15 - 25 cm (5.9 - 9.8 in)
- 10 - 15 cm (3.9 - 5.9 in)
- 6 - 10 cm (2.4 - 3.9 in)
- 4 - 6 cm (1.6 - 2.4 in)
- 2 - 4 cm (0.8 - 1.6 in)
- 1 - 2 cm (0.4 - 0.8 in)
- 0 - 1 cm (0 - 0.4 in)

- Subsidence Feature
- Hardrock
- Highways and Interstates**
- Interstate
- US
- State
- Roads



1:100,000



Decorrelation (white areas) are areas where the phase of the received satellite signal changed between satellite passes, causing the data to be unusable. This occurs in areas where the land surface has been disturbed (i.e. bodies of water, snow, agriculture areas, areas of development, etc).

Coordinate System: NAD 1983 UTM Zone 12N
 Projection: Transverse Mercator
 Datum: North American 1983
 Units: Meter
 Created: 7/6/2021

